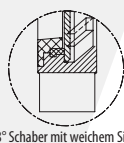
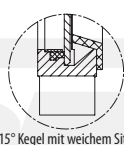
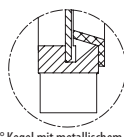
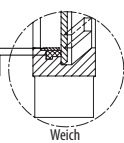
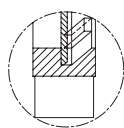
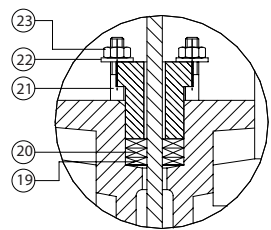


DETAIL A



DETAIL B



Abmessungen\*

| DN  | INCH   | A   | B   | C   | D    | V   | E    |
|-----|--------|-----|-----|-----|------|-----|------|
| 50  | 2"     | 40  | 92  | 63  | 244  | 266 | 417  |
| 65  | 2 1/2" | 40  | 92  | 70  | 268  | 266 | 442  |
| 80  | 3"     | 50  | 92  | 92  | 296  | 266 | 469  |
| 100 | 4"     | 50  | 92  | 105 | 336  | 266 | 509  |
| 125 | 5"     | 50  | 102 | 120 | 370  | 266 | 593  |
| 150 | 6"     | 60  | 102 | 130 | 421  | 266 | 644  |
| 200 | 8"     | 60  | 119 | 160 | 527  | 266 | 825  |
| 250 | 10"    | 70  | 119 | 198 | 628  | 266 | 1026 |
| 300 | 12"    | 70  | 119 | 234 | 728  | 266 | 1126 |
| 350 | 14"    | 96  | 194 | 256 | 838  | 402 | 1357 |
| 400 | 16"    | 100 | 194 | 292 | 944  | 402 | 1463 |
| 450 | 18"    | 106 | 290 | 308 | 1032 | 402 | 1651 |
| 500 | 20"    | 110 | 290 | 340 | 1137 | 402 | 1756 |
| 600 | 24"    | 110 | 290 | 400 | 1343 | 402 | 2062 |

Materialien\*

|    | Ausführung in:   | Grauguss  | Edelstahl    |
|----|------------------|---|--------------|
| 1  | Gehäuse          | GG25  | 1.4408/CF8M  |
| 2  | Stopfbuchsbrille | Aluminium   | 1.4408/SS316 |
| 3  | Platte           | 1.4301/SS304                                      | 1.4408/SS316 |
| 4  | Trägerplatten    | Stahl   | Stahl        |
| 5  | Schmierer        | Aluminium   | Aluminium    |
| 6  | Mutter           | Edelstahl   | Edelstahl    |
| 7  | Schraube         | Edelstahl   | Edelstahl    |
| 8  | Mutter           | Edelstahl   | Edelstahl    |
| 9  | Spindel          | 1.4301/SS304                                      | 1.4301/SS304 |
| 10 | Unterlegscheibe  | Edelstahl   | Edelstahl    |
| 11 | Antriebsmutter   | Bronze  | Bronze       |
| 12 | Brücke           | Stahl   | Stahl        |
| 13 | Unterlegscheibe  | Messing   | Brass        |
| 14 | Kettenrad        | Stahl   | Stahl        |
| 15 | Hülse            | Stahl   | Stahl        |
| 16 | Deckel           | Plastic   | Plastic      |
| 17 | Sitz             | EPDM / NBR / Viton / Silicon / Flucast ABP / PTFE |              |
| 18 | Dichtring        | 1.4408/SS316                                      | 1.4408/SS316 |
| 19 | Packung          | Synt. + PTFE / PTFE / Graphite / Ceramic fibre    |              |
| 20 | Dichtung         | EPDM / NBR / Viton / PTFE                         |              |
| 21 | Schrauben        | Edelstahl   | Edelstahl    |
| 22 | Unterlegscheibe  | Edelstahl   | Edelstahl    |
| 23 | Mutter           | Edelstahl   | Edelstahl    |

Druckstufen

|                 |        |
|-----------------|--------|
| DN50 - DN250:   | 10 bar |
| DN300 - DN400:  | 6 bar  |
| DN450:          | 5 bar  |
| DN500 - DN600:  | 4 bar  |
| DN700 - DN1200: | 2 bar  |

Farbe / Lackierung\*

RAL 5015

Flansche gebohrt nach EN 1092-2 und DIN 2501: ISO PN10  
(Für weitere Informationen sehen Sie bitte in unserem Downloadbereich unserer Webseite)

\*Andere Maße, Materialien und Farben auf Anfrage.