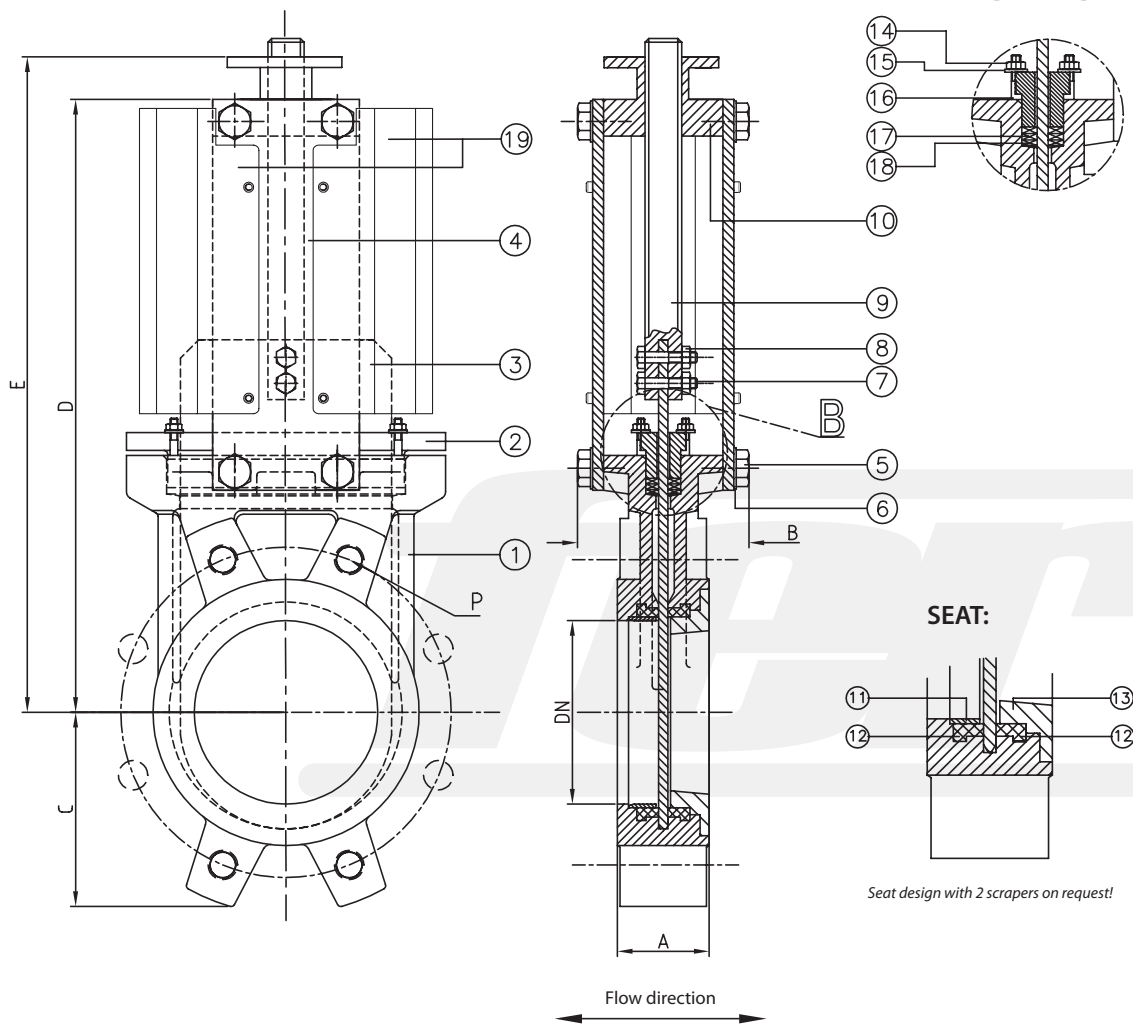


**Bidirectional tightness, with seat incl. scraper 8°**



Dimensions (1)\*

DN	INCH	A	B	C	D	E	Torque [Nm]	Max. actuator torque [Nm]	Stem	Recommended actuator	Standard coupling
50	2"	40	90	60	240	293	10	30	20x4	SA 07.2	ISO/F10 A
65	2 1/2"	40	90	68	270	323	12	30	20x4	SA 07.2	ISO/F10 A
80	3"	50	90	90	295	348	15	30	20x4	SA 07.2	ISO/F10 A
100	4"	50	90	105	335	388	20	30	20x4	SA 07.2	ISO/F10 A
125	5"	50	100	118	370	423	25	30	20x4	SA 07.2	ISO/F10 A
150	6"	60	100	135	418	471	30	30	20x4	SA 07.2	ISO/F10 A
200	8"	60	120	170	522	575	35	60	25x5	SA 07.6	ISO/F10 A
250	10"	70	120	202	625	678	45	60	25x5	SA 07.6	ISO/F10 A
300	12"	70	120	240	725	778	60	60	25x5	SA 07.6	ISO/F10 A
350	14"	96	192	255	845	898	70	120	35x6	SA 10.2	ISO/F10 A
400	16"	100	192	295	945	998	90	120	35x6	SA 10.2	ISO/F10 A
450	18"	106	192	318	1045	1098	100	120	35x6	SA 10.2	ISO/F10 A
500	20"	110	192	345	1148	1201	110	120	35x6	SA 10.2	ISO/F10 A
600	24"	110	290	405	1360	1413	170	250	35x6	SA 14.2	ISO/F14 A

Dimensions (2)\*

DN	INCH	ØK -PN10	ØK -ANSI150	P - No. holes	P -PN10	P -ANSI150
50	2"	125	120,6	4	M16	W 5/8"
65	2 1/2"	145	139,7	4	M16	W 5/8"
80	3"	160	152,4	8	M16	W 5/8"
100	4"	180	190,5	8	M16	W 5/8"
125	5"	210	215,9	8	M16	W 3/4"
150	6"	240	241,3	8	M20	W 3/4"
200	8"	295	298,4	8	M20	W 3/4"
250	10"	350	361,9	12	M20	W 7/8"
300	12"	400	431,8	12	M20	W 7/8"
350	14"	460	476,2	16	M20	W 1"
400	16"	515	539,7	16	M24	W 1"
450	18"	565	577,8	20	M24	W 1 1/8"
500	20"	620	635	20	M24	W 1 1/8"
600	24"	725	749,3	20	M27	W 1 1/4"

Materials\*

	GG25 type	Stainless Steel type
1 <b>Body</b>	GG25	1.4408/SS316
2 <b>Packing gland</b>	Aluminium / GGG50	1.4408/SS316
3 <b>Gate</b>	1.4301/SS304L	1.4408/SS316L
4 <b>Support plate</b>	Steel	Steel
5 <b>Bolts</b>	Steel	Stainless steel
6 <b>Grower washer</b>	Steel	Stainless steel
7 <b>Union stud stem-gate</b>	Steel	Stainless steel
8 <b>Union nut stem-gate</b>	Steel	Stainless steel
9 <b>Stem</b>	1.4305/SS303	1.4305/SS303
10 <b>Support bridge</b>	Steel	Steel
11 <b>Sealing ring</b>	1.4408/SS316	1.4408/SS316
12 <b>Seat</b>	EPDM / NBR / Viton / Silicon / Flucastr ABP / PTFE	
13 <b>Scraper 8°</b>	1.4408/SS316	1.4408/SS316
14 <b>Nut</b>	Steel	Stainless steel
15 <b>Washer</b>	Steel	Stainless steel
16 <b>Stud</b>	Steel	Stainless steel
17 <b>Packing o-ring</b>	EPDM / NBR / Viton / PTFE	
18 <b>Packing</b>	Synt. + PTFE / PTFE / Graphite / Ceramic fibre	
19 <b>Covers (option)</b>	1.4301/SS304L	

Maximum working pressure recommended

DN50 - DN250: 10 bar  
 DN300 - DN400: 6 bar  
 DN450 - DN600: 4 bar

Higher pressure on request [reinforced design]

Standard test pressure

DN50 - DN400: 6 bar  
 DN450 - DN600: 4 bar

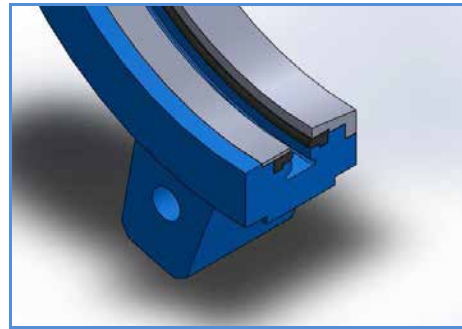
Colour\*

 RAL 5015

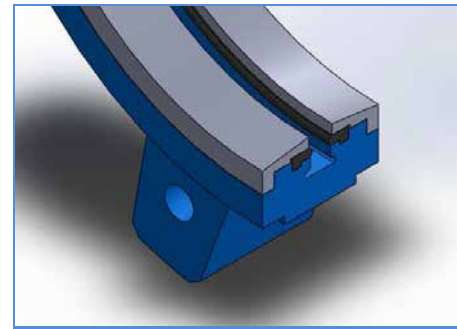
Flanges drilled according to EN 1092-2 and DIN 2501: ISO PN10 or ANSI 150 (for further informations please visit our download section on our website)

\*Other dimensions / materials / colours on request.

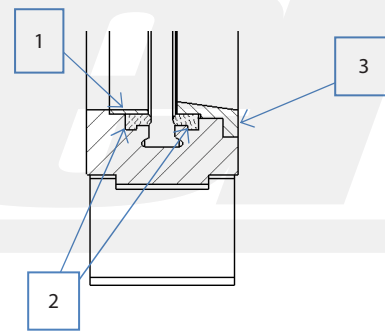
## FB200, BIDIRECTIONAL



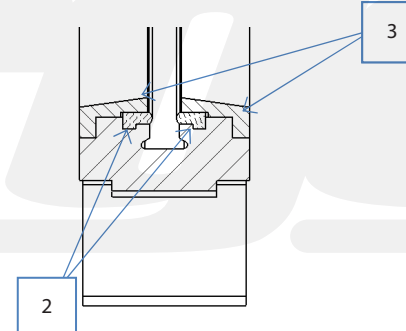
(1) Soft seated



(2) Soft seated, reinforced



Flow direction  
↔



Flow direction  
↔

- 1 Fixing ring
- 2 Soft seat
- 3 Scraper 8°