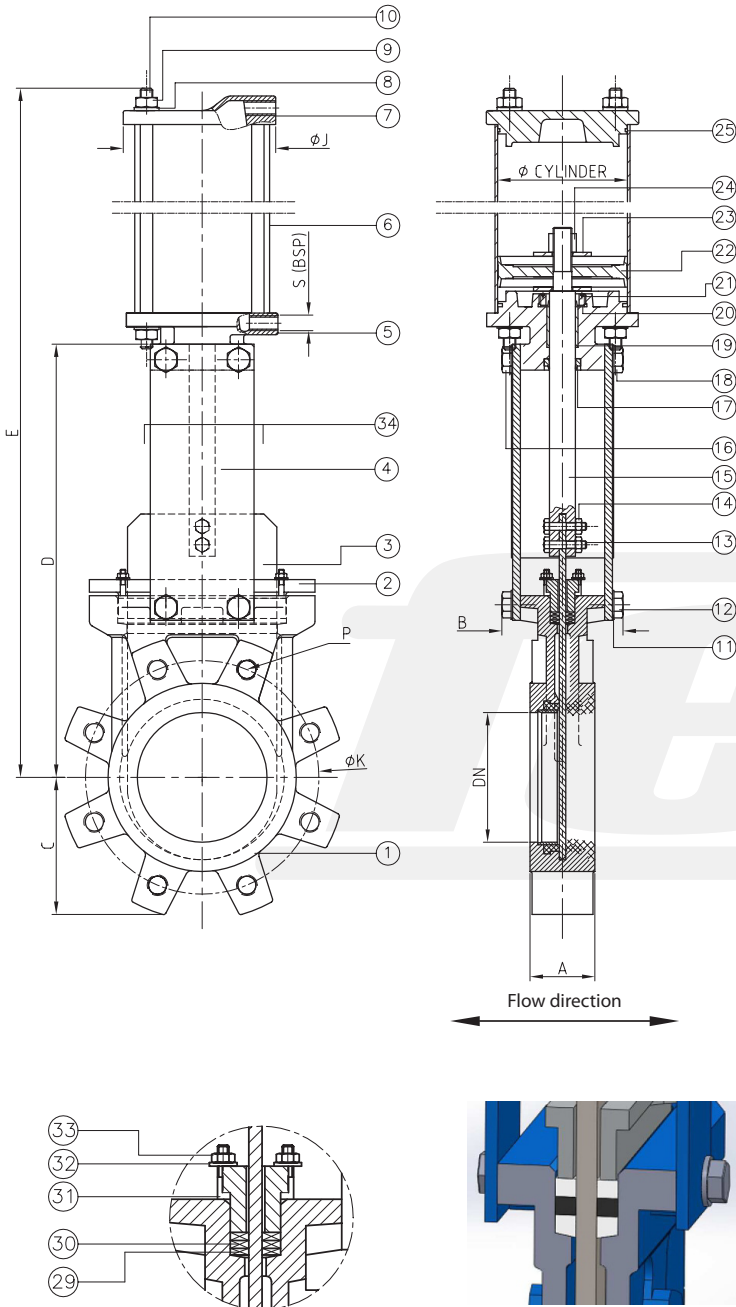
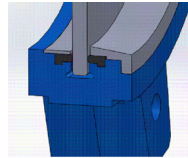
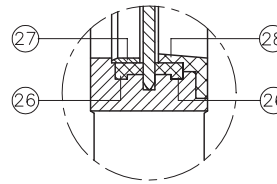


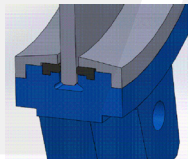
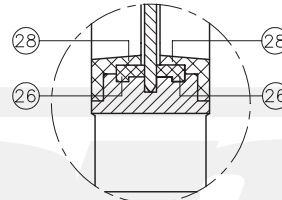
BIDIRECTIONAL TIGHTNESS



SEAT: standard



SEAT: reinforced



Dimensions*

DN	INCH	A	B	C	D	E	Ø Cyl.	Ø J	S (BSP)	ØK PN10	ØK ANSI150	P Holes - PN10	P Holes - ANSI150
50	2"	40	90	60	240	410	80	102,5	1/4"	125	120,6	4 - M16	4 - 5/8" UNC
65	2 1/2"	40	90	68	270	456	80	102,5	1/4"	145	139,7	4 - M16	4 - 5/8" UNC
80	3"	50	90	90	295	500	80	102,5	1/4"	160	152,4	8 - M16	4 - 5/8" UNC
100	4"	50	90	105	335	560	100	122	1/4"	180	190,5	8 - M16	8 - 5/8" UNC
125	5"	50	100	118	370	640	125	147	1/4"	210	215,9	8 - M16	8 - 3/4" UNC
150	6"	60	100	135	418	716	125	147	1/4"	240	241,3	8 - M20	8 - 3/4" UNC
200	8"	60	120	170	522	880	160	182	1/4"	295	298,4	8 - M20	8 - 3/4" UNC
250	10"	70	120	202	625	1042	200	229	1/4"	350	361,9	12 - M20	12 - 7/8" UNC
300	12"	70	120	240	725	1182	200	229	1/4"	400	431,8	12 - M20	12 - 7/8" UNC
350	14"	96	192	255	845	1360	250	281	3/8"	460	476,2	16 - M20	12 - 1" UNC
400	16"	100	192	295	945	1540	250	281	3/8"	515	539,7	16 - M24	16 - 1" UNC
450	18"	106	192	318	1045	1675	300	343	3/8"	565	577,8	20 - M24	16 - 1 1/8" UNC
500	20"	110	192	345	1148	1840	300	343	3/8"	620	635	20 - M24	20 - 1 1/8" UNC
600	24"	110	290	405	1360	2145	300	343	3/8"	725	749,3	20 - M27	20 - 1 1/4" UNC

Materials*

Execution in:	Cast iron	Stainless steel
1 Body	GG25	1.4408/SS316
2 Gasket clamp	Aluminium / GGG50	1.4408/SS316
3 Gate	1.4301/SS304L	1.4404/SS316L
4 Support plate	Steel	Steel
5 Lower cup	Aluminium	Aluminium
6 Pneumatic tube	Aluminium	Aluminium
7 Upper cup	Aluminium	Aluminium
8 Washer	Stainless steel	Stainless steel
9 Nut	Stainless steel	Stainless steel
10 Tie rod	Stainless steel	Stainless steel
11 Grower washer	Stainless steel	Stainless steel
12 Bolts	Stainless steel	Stainless steel
13 Union studs	Stainless steel	Stainless steel
14 Union nuts	Stainless steel	Stainless steel
15 Stem	1.4305/SS303	1.4305/SS303
16 Nut	Stainless steel	Stainless steel
17 Scraper	NBR	NBR
18 Fixing nut	Stainless steel	Stainless steel
19 Gasket	Bronze	Bronze
20 Sealing ring	NBR	NBR
21 Sealing gland	SS316	SS316
22 Piston rod	NBR	NBR
23 Washer	Stainless steel	Stainless steel
24 Nut	Stainless steel	Stainless steel
25 Sealing o-ring	EPDM	EPDM
26 Seat	EPDM / NBR / Viton / Silicon / Fluocast ABP / PTFE	
27 Ring	SS304	SS316
28 Scraper 8°	SS304	SS316
29 Packing	Synt. + PTFE / PTFE / Graphite / Ceramic fibre	
30 Toric joint	EPDM / NBR / Viton / PTFE	
31 Studs	Stainless steel	Stainless steel
32 Washer	Stainless steel	Stainless steel
33 Mutter	Stainless steel	Stainless steel
34 Protections	SS304L	SS304L

Maximum working pressure recommended

DN50 - DN250: 10 bar
 DN300 - DN400: 6 bar
 DN450 - DN600: 4 bar

Higher pressure on request [reinforced design]

Standard test pressure

DN50 - DN400: 6 bar
 DN450 - DN600: 4 bar

Colour*

RAL 5015

Flanges drilled according to EN 1092-2 and DIN 2501: ISO PN10 or ANSI 150 (for further informations please visit our download section on our website)

*Other dimensions / materials / colours on request.