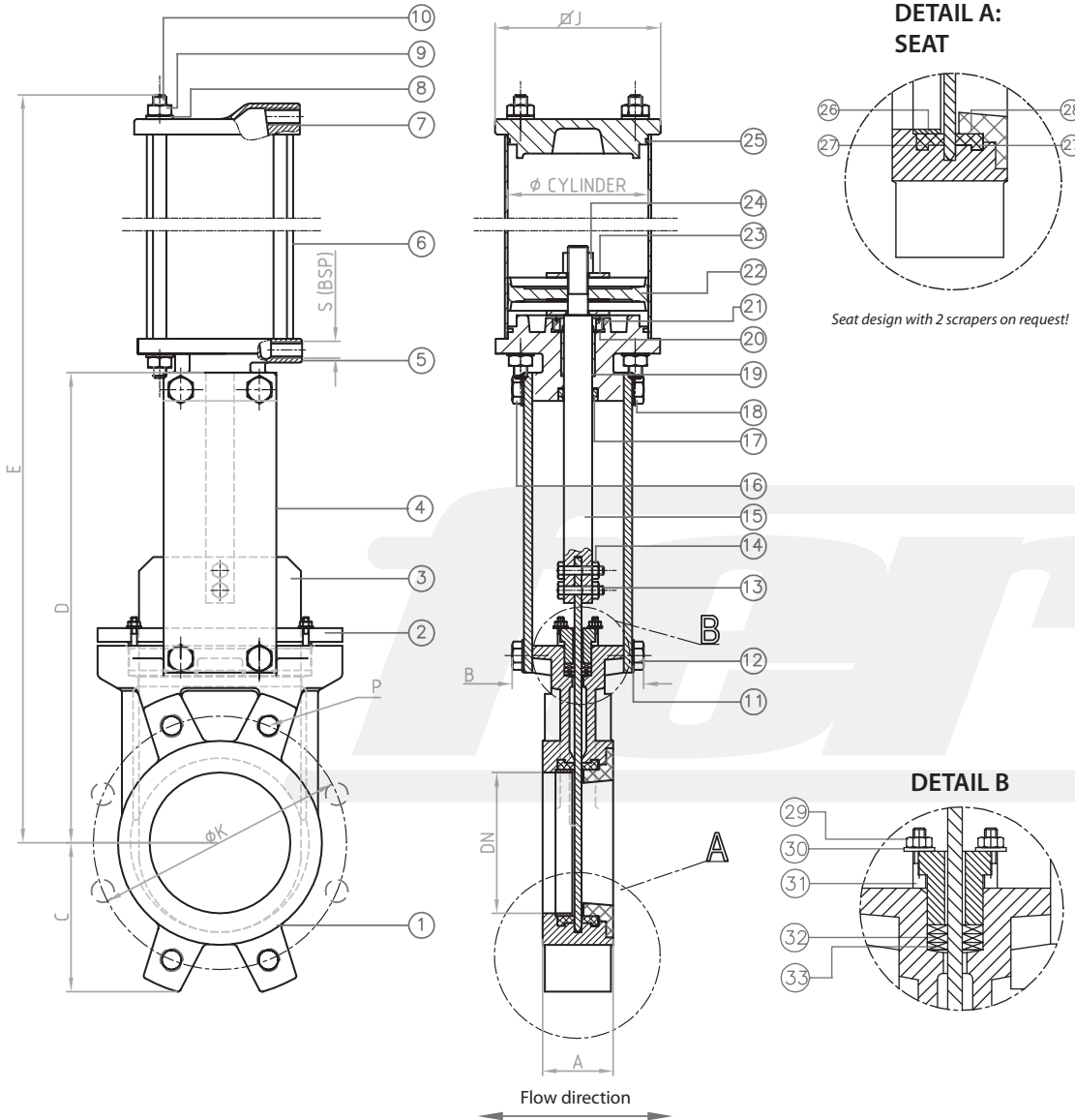


Bidirectional tightness, with seat incl. scraper 8°



Dimensions*

DN	INCH	A	B	C	D	E	Ø Cylinder	ØJ	S (B.S.P.)	ØK PN10	ØK ANSI150	No. holes	P PN10	P ANSI150
50	2"	40	90	60	240	410	80	102,5	1/4"	125	120,6	4	M16	W 5/8"
65	2 1/2"	40	90	68	270	456	80	102,5	1/4"	145	139,7	4	M16	W 5/8"
80	3"	50	90	90	295	500	80	102,5	1/4"	160	152,4	8	M16	W 5/8"
100	4"	50	90	105	335	560	100	122	1/4"	180	190,5	8	M16	W 5/8"
125	5"	50	100	118	370	640	125	147	1/4"	210	215,9	8	M16	W 3/4"
150	6"	60	100	135	418	716	125	147	1/4"	240	241,3	8	M20	W 3/4"
200	8"	60	120	170	522	880	160	182	1/4"	295	298,4	8	M20	W 3/4"
250	10"	70	120	202	625	1042	200	229	1/4"	350	361,9	12	M20	W 7/8"
300	12"	70	120	240	725	1182	200	229	1/4"	400	431,8	12	M20	W 7/8"
350	14"	96	192	255	845	1360	250	281	3/8"	460	476,2	16	M20	W 1"
400	16"	100	192	295	945	1540	250	281	3/8"	515	539,7	16	M24	W 1"
450	18"	106	192	318	1045	1675	300	343	3/8"	565	577,8	20	M24	W 1 1/8"
500	20"	110	192	345	1148	1840	300	343	3/8"	620	635	20	M24	W 1 1/8"
600	24"	110	290	405	1360	2145	300	343	3/8"	725	749,3	20	M27	W 1 1/4"

Seat design with 2 scrapers on request!

Materials*

	GG25 type	Stainless Steel type
1 Body	GG25	1.4408/SS316
2 Packing gland	Aluminium / GGG50	1.4408/SS316
3 Gate	1.4301/SS304L	1.4408/SS316L
4 Support plate	Steel	Steel
5 Lower cup	Aluminium	Aluminium
6 Pneumatic tube	Aluminium	Aluminium
7 Upper cup	Aluminium	Aluminium
8 Washer	Steel	Stainless steel
9 Nut	Steel	Stainless steel
10 Tie rod	Steel	Stainless steel
11 Grower washer	Steel	Stainless steel
12 Bolt	Steel	Stainless steel
13 Union stud stem-gate	Steel	Stainless steel
14 Union nut stem-gate	Steel	Stainless steel
15 Stem	1.4305/SS303	1.4305/SS303
16 Nut	Steel	Stainless steel
17 Scraper	NBR	NBR
18 Actuator fixing nut	Steel	Stainless steel
19 Gasket	Bronze	Bronze
20 Sealing ring	NBR	NBR
21 Sealing gland	1.4408/SS316	1.4408/SS316
22 Piston rod	NBR	NBR
23 Washer	Steel	Stainless steel
24 Nut	Steel	Stainless steel
25 Sealing o-ring	EPDM	EPDM
26 Fixing ring	1.4408/SS316	1.4408/SS316
27 Seat	EPDM / NBR / Viton / Silicon / Flucast ABP / PTFE	
28 Scraper 8°	1.4408/SS316	1.4408/SS316
29 Nut	Steel	Stainless steel
30 Washer	Steel	Stainless steel
31 Stud	Steel	Stainless steel
32 Packing o-ring	EPDM / NBR / Viton / PTFE	
33 Packing	Synt. + PTFE / PTFE / Graphite / Ceramic fibre	

Maximum working pressure recommended

DN50 - DN250:	10 bar
DN300 - DN400:	6 bar
DN450 - DN600:	4 bar

Higher pressure on request [reinforced design]

Standard test pressure

DN50 - DN400:	6 bar
DN450 - DN600:	4 bar

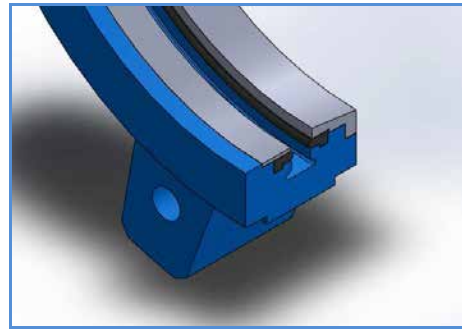
Colour*



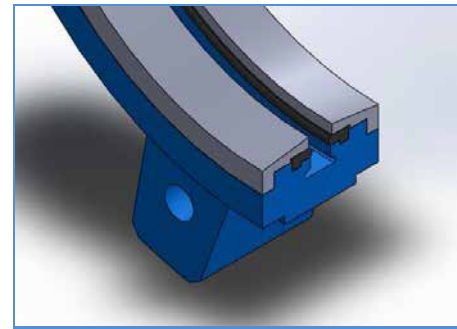
Flanges drilled according to EN 1092-2 and DIN 2501: ISO PN10 or ANSI 150 (for further informations please visit our download section on our website)

*Other dimensions / materials / colours on request.

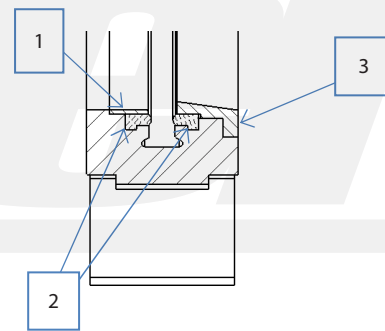
FB200, BIDIRECTIONAL



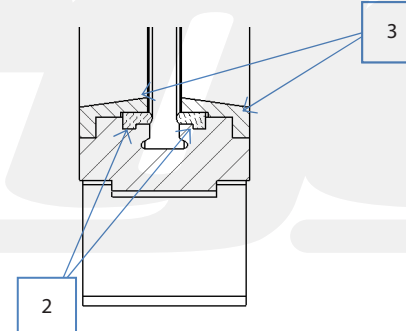
(1) Soft seated



(2) Soft seated, reinforced



Flow direction
↔



Flow direction
↔

- 1 Fixing ring
- 2 Soft seat
- 3 Scraper 8°