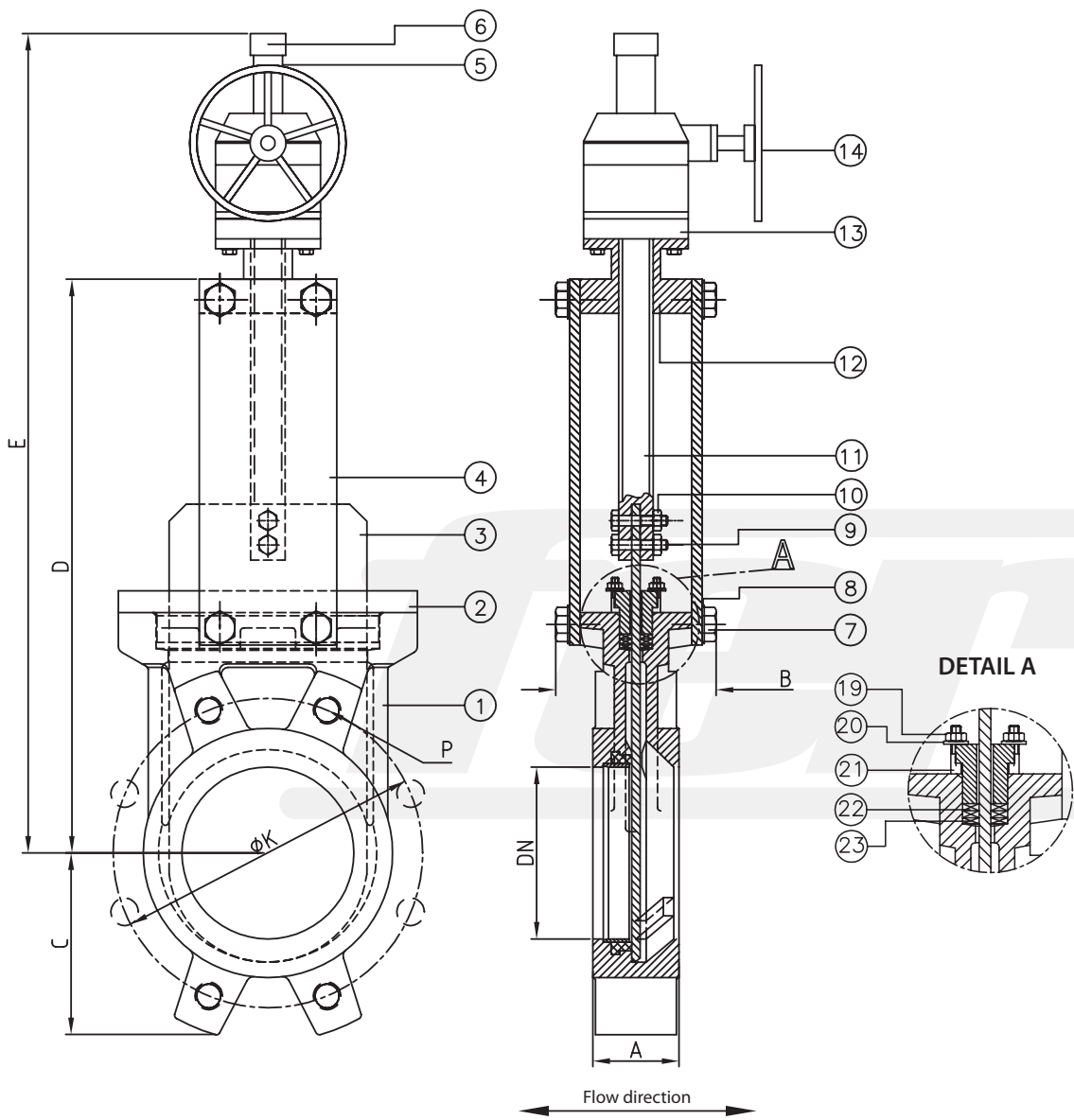


Bidirectional tightness



Dimensions*

DN	INCH	A	B	C	D	E	ØK - PN10	ØK - ANSI150	No. Holes	P - PN10	P - ANSI150
200	8"	60	120	170	522	930	295	298,4	8	M20	W 3/4"
250	10"	70	120	202	625	1130	350	361,9	12	M20	W 7/8"
300	12"	70	120	240	725	1230	400	431,8	12	M20	W 7/8"
350	14"	96	192	255	845	1502	460	476,2	16	M20	W 1"
400	16"	100	192	295	945	1607	515	539,7	16	M24	W 1"
450	18"	106	192	318	1045	1697	565	577,8	20	M24	W 1 1/8"
500	20"	110	192	345	1148	1813	620	635	20	M24	W 1 1/8"
600	24"	110	290	405	1360	2148	725	749,3	20	M27	W 1 1/4"

Materials*

	GG25 type	Stainless Steel type
1 Body	GG25	1.4408/SS316
2 Packing gland	Aluminium / GGG50	1.4408/SS316
3 Gate	1.4301/SS304L	1.4408/SS316L
4 Support plate	Steel	Steel
5 Tube	Steel	Steel
6 Cover	Plastic	Plastic
7 Bolt	Steel	A2
8 Grower washer	Steel	A2
9 Union stud stem-gate	Steel	A2
10 Union nut stem-gate	Steel	A2
11 Stem	1.4305/SS303	1.4305/SS303
12 Support bridge	Steel	Steel
13 Gear box		
14 Handwheel	GG25	GG25
15 Sealing ring	1.4408/SS316	1.4408/SS316
16 Seat	EPDM / NBR / Viton / Silicon / Flucastr ABP / PTFE	
17 Scraper 8°	1.4408/SS316	1.4408/SS316
18 Nut	Steel	A2
19 Washer	Steel	A2
20 Stud	Steel	A2
21 Packing o-ring	EPDM / NBR / Viton / PTFE	
22 Packing	Synt. + PTFE / PTFE / Graphite / Ceramic fibre	

Maximum working pressure recommended

DN200 - DN250: 10 bar
 DN300 - DN400: 6 bar
 DN450 - DN600: 4 bar

Higher pressure on request [reinforced design]

Standard test pressure
 DN200 - DN400: 6 bar
 DN450 - DN600: 4 bar

Colour*

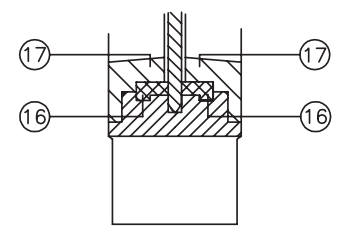
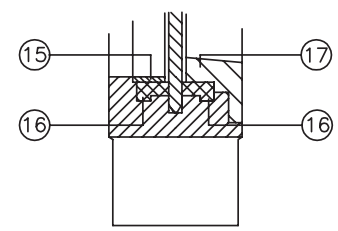
RAL 5015

Flanges drilled according to EN 1092-2 and DIN 2501: ISO PN10 or ANSI 150
 (for further informations please visit our download section on our website)

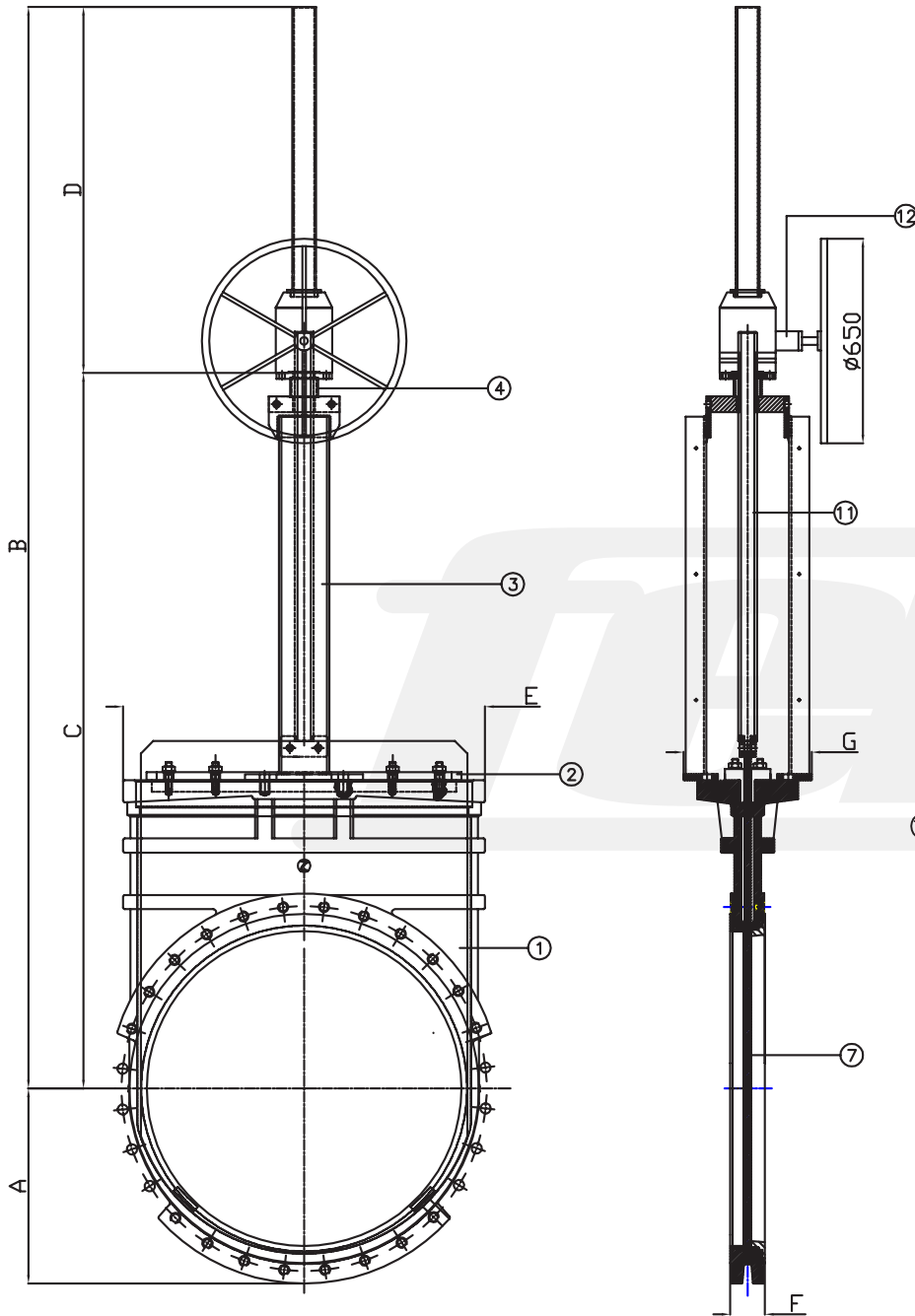
*Other dimensions / materials / colours on request.

SEAT

REINFORCED SEAT



Bidirectional tightness



Dimensions*

DN	INCH	A	B	C	D	E	F	G	ØK - PN10	No. Holes	P - PN10
700	28"	460	2501	1646	855	838	110	408	840	24	M27
800	32"	503	2788	1833	955	970	110	408	950	24	M30
900	36"	586	3149	2094	1055	1040	110	408	1050	28	M30
1000	40"	620	3439	2284	1155	1150	110	408	1160	28	M33
1200	48"	755	4159	2804	1355	1450	150	408	1380	32	M36

Materials*

	Ductiel iron type	Stainless Steel type
1 Body	GGG40	1.4408/CF8M
2 Packing gland	GGG40	1.4408/CF8M
3 Support plate	Steel	Steel
4 Support bridge	Steel	Steel
5 Sealing ring	1.4408/SS316L	1.4408/SS316L
6 Scraper 8°	1.4408/SS316L	1.4408/SS316L
7 Gate	1.4301/SS304L	1.4408/SS316L
8 Seat	EPDM / NBR / Viton / Silicon / Flucast ABP / PTFE	
9 Packing	Synt. + PTFE / PTFE / Graphite / Ceramic fibre	
10 Toric joint	EPDM / NBR / Viton / PTFE	
11 Stem	1.4305/SS303	1.4305/SS303
12 Gear box		

Maximum working pressure recommended

DN700 - DN1200: 2 bar

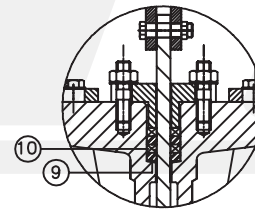
Colour*

 RAL 5015

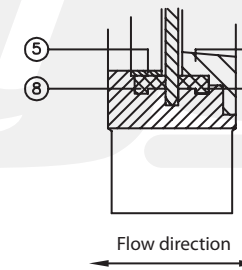
Flanges drilled according to EN 1092-2 and DIN 2501: ISO PN10 or ANSI 150 (for further informations please visit our download section on our website)

*Other dimensions / materials / colours on request.

PACKING DETAIL



SEAT



REINFORCED SEAT

