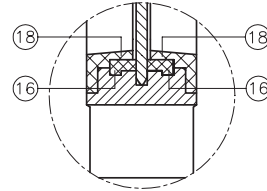
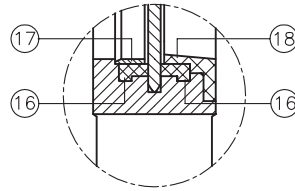


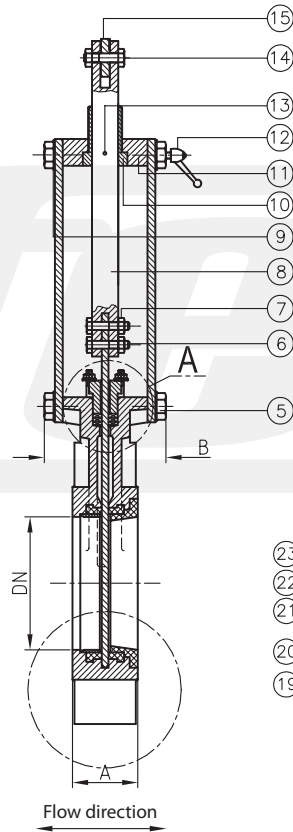
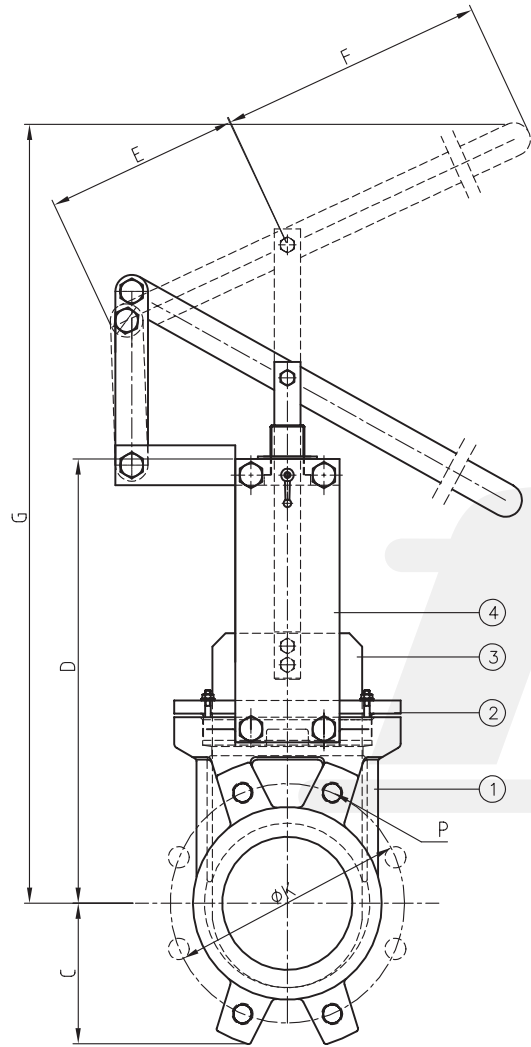
Bidirectional tightness, with seat incl. scraper 8°

STANDARD SEAT

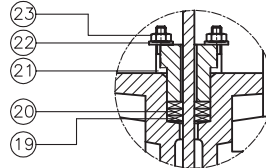
REINFORCED SEAT*



*ON REQUEST!



DETAIL A



Dimensions*

DN	INCH	A	B	C	D	E	F	G	ØK PN10	ØK ANSI150	P No. holes	P PN10	P ANSI150
50	2"	40	90	60	240	150	300	395	125	120,6	4	M16	W 5/8"
65	2 1/2"	40	90	68	270	150	300	435	145	139,7	4	M16	W 5/8"
80	3"	50	90	90	295	150	300	458	160	152,4	8	M16	W 5/8"
100	4"	50	90	105	335	150	400	590	180	190,5	8	M16	W 5/8"
125	5"	50	100	118	370	150	400	725	210	215,9	8	M16	W 3/4"
150	6"	60	100	135	418	150	400	892	240	241,3	8	M20	W 3/4"
200	8"	60	120	170	522	232	600	1280	295	298,4	8	M20	W 3/4"
250	10"	70	120	202	625	232	600	1430	350	361,9	12	M20	W 7/8"
300	12"	70	120	240	725	232	600	1580	400	431,8	12	M20	W 7/8"

Materials*

	GG25 type	Stainless Steel type
1 Body	GG25	1.4408/SS316
2 Packing gland	Aluminium / GGG50	1.4408/SS316
3 Gate	1.4301/SS304L	1.4408/SS316L
4 Support plate	Steel	Steel
5 Bolt	Stainless steel	Stainless steel
6 Union stud stem-gate	Stainless steel	Stainless steel
7 Union nut stem-gate	Stainless steel	Stainless steel
8 Stem	1.4305/SS303	1.4305/SS303
9 Grower washer	Stainless steel	Stainless steel
10 Manoeuvring nut	Brass	Brass
11 Manoeuvring support	Steel	Steel
12 Block system	Standard	
13 Stop screw	Stainless steel	Stainless steel
14 Bolt	Stainless steel	Stainless steel
15 Lever	Steel	Steel
16 Seat	EPDM / NBR / Viton / Silicon / Flucast ABP / PTFE	
17 Sealing ring	1.4408/SS316	1.4408/SS316
18 Scraper 8°	1.4408/SS316	1.4408/SS316
19 Packing	Synt. + PTFE / PTFE / Graphite / Ceramic fibre	
20 Packing o-ring	EPDM / NBR / Viton / PTFE	
21 Stud	Stainless steel	Stainless steel
22 Washer	Stainless steel	Stainless steel
23 Nut	Stainless steel	Stainless steel

Maximum working pressure recommended

DN50 - DN250: 10 bar
 DN300 - DN400: 6 bar
 DN450 - DN600: 4 bar

Higher pressure on request [reinforced design]

Standard test pressure

DN50 - DN400: 6 bar
 DN450 - DN600: 4 bar

Colour*

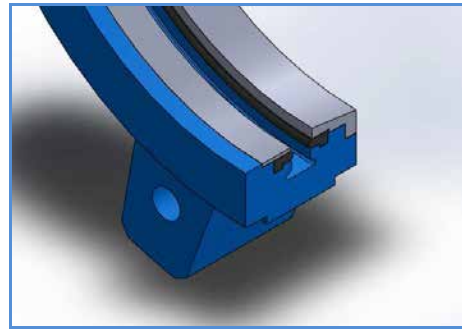


RAL 5015

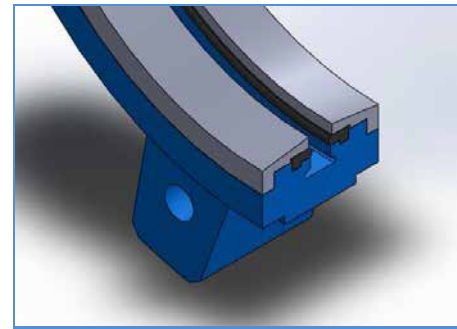
Flanges drilled according to EN 1092-2 and DIN 2501: ISO PN10 or ANSI 150 (for further informations please visit our download section on our website)

*Other dimensions / materials / colours on request.

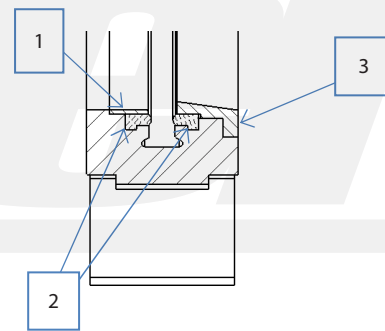
FB200, BIDIRECTIONAL



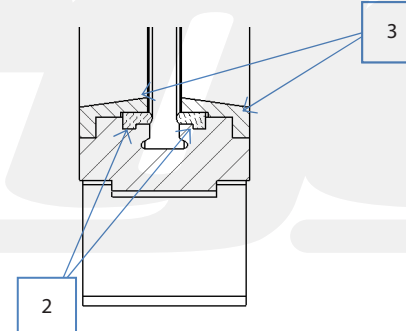
(1) Soft seated



(2) Soft seated, reinforced



Flow direction
↔



Flow direction
↔

- 1 Fixing ring
- 2 Soft seat
- 3 Scraper 8°