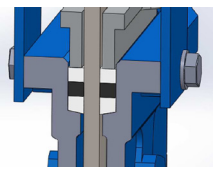
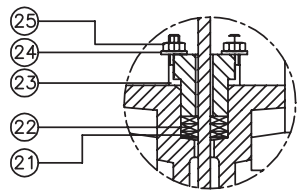
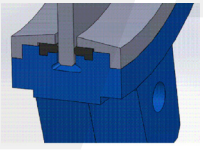
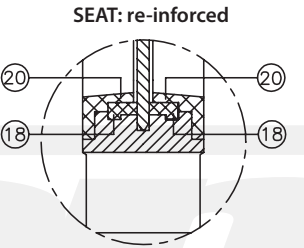
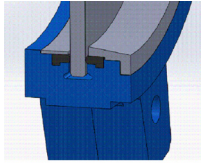
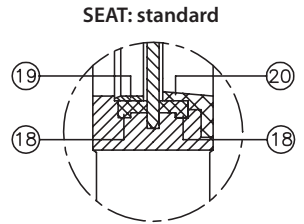
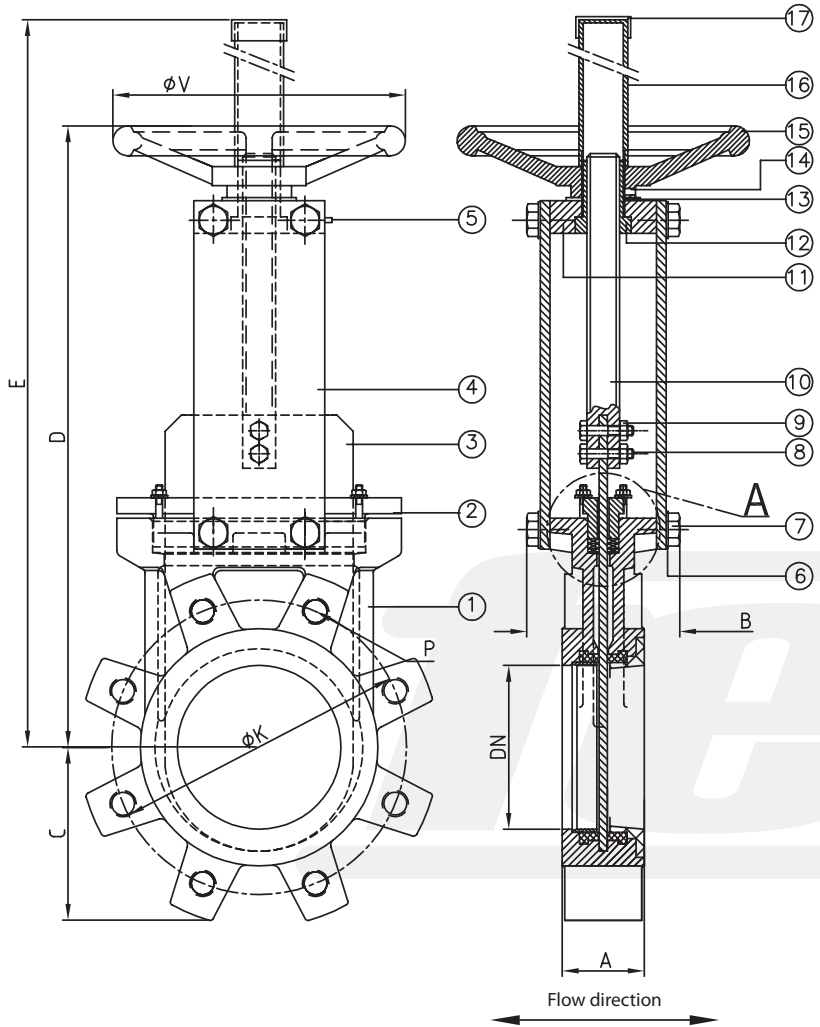


BIDIRECTIONAL TIGHTNESS



Dimensions*

DN	INCH	A	B	C	D	E	ØV	ØK PN10	ØK ANSI150	P Holes - PN10	P Holes - ANSI150
50	2"	40	90	60	284	425	200	125	120,6	4 - M16	4 - 5/8" UNC
65	2 1/2"	40	90	68	308	450	200	145	139,7	4 - M16	4 - 5/8" UNC
80	3"	50	90	90	334	480	200	160	152,4	8 - M16	4 - 5/8" UNC
100	4"	50	90	105	374	520	200	180	190,5	8 - M16	8 - 5/8" UNC
125	5"	50	100	118	413	600	250	210	215,9	8 - M16	8 - 3/4" UNC
150	6"	60	100	135	465	650	250	240	241,3	8 - M20	8 - 3/4" UNC
200	8"	60	120	170	582	820	300	295	298,4	8 - M20	8 - 3/4" UNC
250	10"	70	120	202	682	1020	300	350	361,9	12 - M20	12 - 7/8" UNC
300	12"	70	120	240	782	1120	300	400	431,8	12 - M20	12 - 7/8" UNC
350	14"	96	192	255	898	1380	400	460	476,2	16 - M20	12 - 1" UNC
400	16"	100	192	295	1003	1490	400	515	539,7	16 - M24	16 - 1" UNC
450	18"	106	192	318	1093	1580	500	565	577,8	20 - M24	16 - 1 1/8" UNC
500	20"	110	192	345	1207	1690	500	620	635	20 - M24	20 - 1 1/8" UNC
600	24"	110	290	405	1410	2030	500	725	749,3	20 - M27	20 - 1 1/4" UNC

Materials*

Execution in:	Cast iron	Stainless steel
1 Body	GG25	1.4408/SS316
2 Gasket clamp	Aluminium / GGG50	1.4408/SS316
3 Gate	1.4301/SS304L	1.4408/SS316L
4 Support plate	Steel	Steel
5 Greaser	Standard	Standard
6 Grower washer	Stainless steel	Stainless steel
7 Bolt	Stainless steel	Stainless steel
8 Union stud stem-gate	Stainless steel	Stainless steel
9 Union nut stem-gate	Stainless steel	Stainless steel
10 Stem	1.4305/SS303	1.4305/SS303
11 Support bridge	Steel	Stainless steel
12 Stem drive nut	Brass	Brass
13 Washer	Brass	Brass
14 Stop screw	Stainless steel	Stainless steel
15 Handwheel	GG25	GG25
16 Tube	Steel	Steel
17 Cover	Plastic	Plastic
18 Seat	EPDM / NBR / Viton / Silicon / Flucast ABP / PTFE	
19 Sealing ring	SS304 (SS316)	SS316
20 Scraper 8°	SS304 (SS316)	SS316
21 Packing	Synt. + PTFE / PTFE / Graphite / Ceramic fibre	
22 Toric joint	EPDM / NBR / Viton / PTFE	
23 Studs	Stainless steel	Stainless steel
24 Washer	Stainless steel	Stainless steel
25 Nut	Stainless steel	Stainless steel

Maximum working pressure recommended

DN50 - DN250:	10 bar
DN300 - DN400:	6 bar
DN450 - DN600:	4 bar

Higher pressure on request [reinforced design]

Standard test pressure

DN50 - DN400:	6 bar
DN450 - DN600:	4 bar

Colour*



Flanges drilled according to EN 1092-2 and DIN 2501: ISO PN10 or ANSI 150 (for further informations please visit our download section on our website)

*Other dimensions / materials / colours on request.