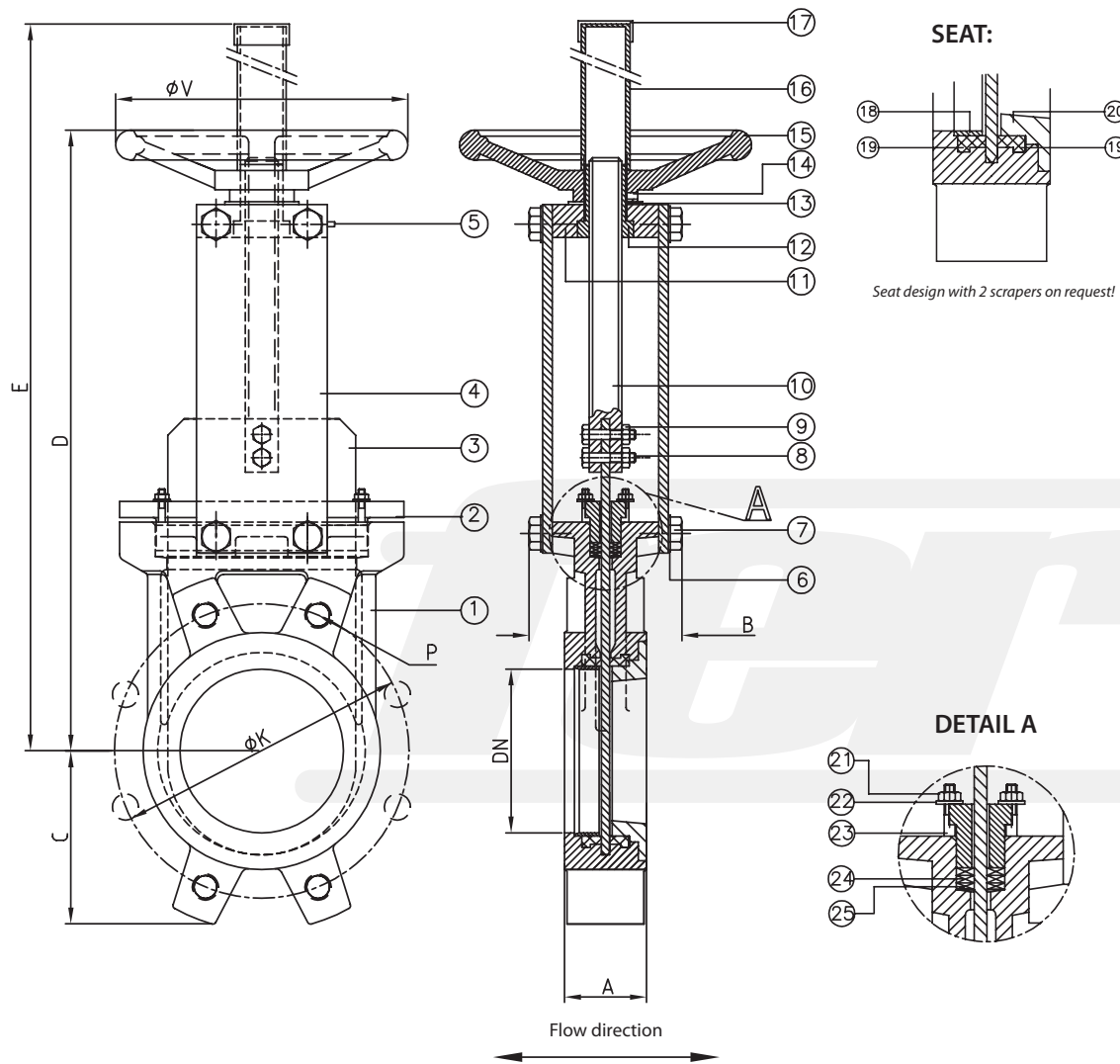


Bidirectional tightness, with seat incl. scraper 8°



Dimensions*

DN	INCH	A	B	C	D	E	ØV	ØJ	ØK PN10	ØK ANSI150	P No. holes	P PN10	P ANSI150
50	2"	40	90	60	284	425	200	102,5	125	120,6	4	M16	W 5/8"
65	2 1/2"	40	90	68	308	450	200	102,5	145	139,7	4	M16	W 5/8"
80	3"	50	90	90	334	480	200	102,5	160	152,4	8	M16	W 5/8"
100	4"	50	90	105	374	520	200	122	180	190,5	8	M16	W 5/8"
125	5"	50	100	118	413	600	250	147	210	215,9	8	M16	W 3/4"
150	6"	60	100	135	465	650	250	147	240	241,3	8	M20	W 3/4"
200	8"	60	120	170	582	820	300	182	295	298,4	8	M20	W 3/4"
250	10"	70	120	202	682	1020	300	229	350	361,9	12	M20	W 7/8"
300	12"	70	120	240	782	1120	300	229	400	431,8	12	M20	W 7/8"
350	14"	96	192	255	898	1380	400	281	460	476,2	16	M20	W 1"
400	16"	100	192	295	1003	1490	400	281	515	539,7	16	M24	W 1"
450	18"	106	192	318	1093	1580	500	343	565	577,8	20	M24	W 1 1/8"
500	20"	110	192	345	1207	1690	500	343	620	635	20	M24	W 1 1/8"
600	24"	110	290	405	1410	2030	500	343	725	749,3	20	M27	W 1 1/4"

Materials*

	GG25 type	Stainless Steel type
1 Body	GG25	1.4408/SS316
2 Packing gland	Aluminium / GGG50	1.4408/SS316
3 Gate	1.4301/SS304L	1.4408/SS316L
4 Support plate	Steel	Steel
5 Greaser	Standard	Standard
6 Grower washer	Steel	Stainless steel
7 Bolt	Steel	Stainless steel
8 Union stud stem-gate	Steel	Stainless steel
9 Union nut stem-gate	Steel	Stainless steel
10 Stem	1.4305/SS303	1.4305/SS303
11 Support bridge	Steel	Stainless steel
12 Stem drive nut	Brass	Brass
13 Washer	Brass	Brass
14 Stop screw	Stainless steel	Stainless steel
15 Handwheel	GG25	GG25
16 Tube	Stahl	Stahl
17 Cover	Plastic	Plastic
18 Sealing ring	1.4408/SS316L	1.4408/SS316L
19 Seat	EPDM / NBR / Viton / Silicon / Flucast ABP / PTFE	
20 Scraper 8°	1.4408/SS316	1.4408/SS316
21 Nut	Steel	Stainless steel
22 Washer	Steel	Stainless steel
23 Stud	Steel	Stainless steel
24 Packing o-ring	EPDM / NBR / Viton / PTFE	
25 Packing	Synt. + PTFE / PTFE / Graphite / Ceramic fibre	

Maximum working pressure recommended

DN50 - DN250:	10 bar
DN300 - DN400:	6 bar
DN450 - DN600:	4 bar

Higher pressure on request [reinforced design]

Standard test pressure

DN50 - DN400:	6 bar
DN450 - DN600:	4 bar

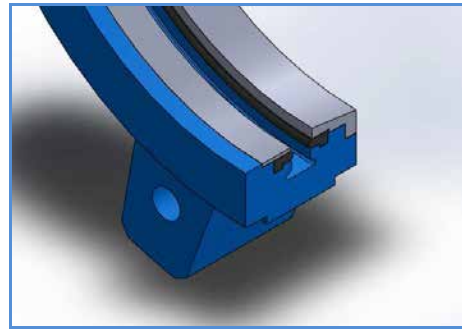
Colour*



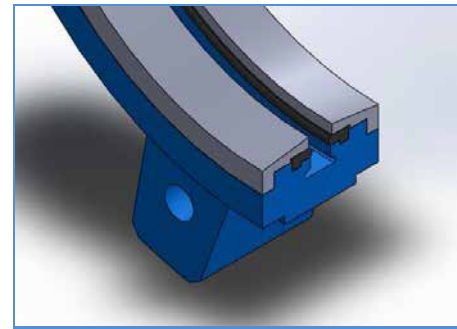
Flanges drilled according to EN 1092-2 and DIN 2501: ISO PN10 or ANSI 150 (for further informations please visit our download section on our website)

*Other dimensions / materials / colours on request.

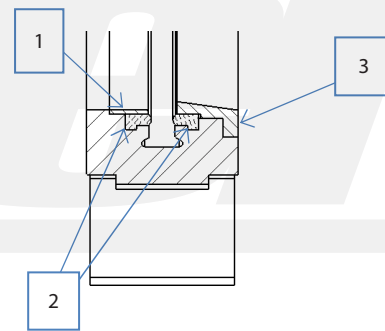
FB200, BIDIRECTIONAL



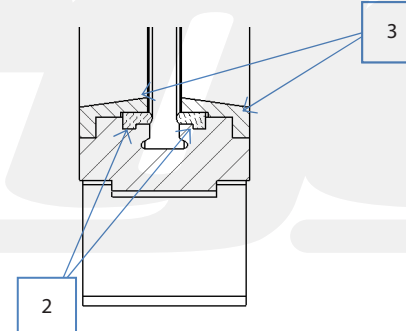
(1) Soft seated



(2) Soft seated, reinforced



Flow direction
↔



Flow direction
↔

- 1 Fixing ring
- 2 Soft seat
- 3 Scraper 8°