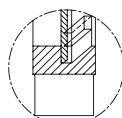
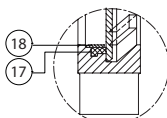


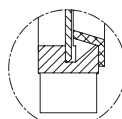
DETAIL A



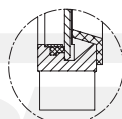
Metal seat



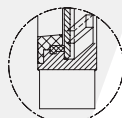
Soft seat



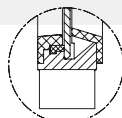
15° Cone with Metal seat



15° Cone with Soft seat

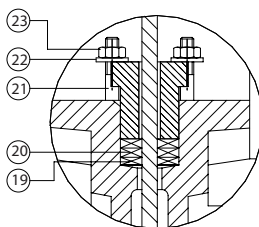


8° Scraper with Soft seat



15° Scraper, 8° Cone and Soft seat

DETAIL B



Dimensions*

DN	INCH	A	B	C	D	V	E
50	2"	40	92	63	244	266	417
65	2 1/2"	40	92	70	268	266	442
80	3"	50	92	92	296	266	469
100	4"	50	92	105	336	266	509
125	5"	50	102	120	370	266	593
150	6"	60	102	130	421	266	644
200	8"	60	119	160	527	266	825
250	10"	70	119	198	628	266	1026
300	12"	70	119	234	728	266	1126
350	14"	96	194	256	838	402	1357
400	16"	100	194	292	944	402	1463
450	18"	106	290	308	1032	402	1651
500	20"	110	290	340	1137	402	1756
600	24"	110	290	400	1343	402	2062

Materials*

Execution in:	Cast iron	Stainless steel
1 Body	GG25	1.4408/CF8M
2 Packing gland	Aluminium	1.4408/SS316
3 Gate	1.4301/SS304	1.4408/SS316
4 Support plates	Steel	Steel
5 Greaser	Aluminium	Aluminium
6 Nuts	Stainless steel	Stainless steel
7 Screws	Stainless steel	Stainless steel
8 Nuts	Stainless steel	Stainless steel
9 Shaft	1.4301/SS304	1.4301/SS304
10 Washer	Stainless steel	Stainless steel
11 Actuator nut	Bronze	Bronze
12 Bridge	Steel	Steel
13 Washer	Brass	Brass
14 Chainwheel	Steel	Steel
15 Tube	Steel	Steel
16 Cap	Plastic	Plastic
17 Seat	EPDM / NBR / Viton / Silicon / Flucast ABP / PTFE	
18 Sealing ring	1.4408/SS316	1.4408/SS316
19 Packing	Synt. + PTFE / PTFE / Graphite / Ceramic fibre	
20 Packing joint	EPDM / NBR / Viton / PTFE	
21 Gland studs	Stainless steel	Stainless steel
22 Washer	Stainless steel	Stainless steel
23 Nut	Stainless steel	Stainless steel

Pressure

DN50 - DN250:	10 bar
DN300 - DN400:	6 bar
DN450:	5 bar
DN500 - DN600:	4 bar
DN700 - DN1200:	2 bar

Colour*

RAL 5015

Flanges drilled according to EN 1092-2 and DIN 2501: ISO PN10
(for further informations please visit our download section on our website)

*Other dimensions / materials / colours on request