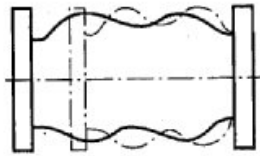
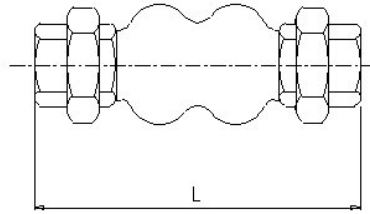
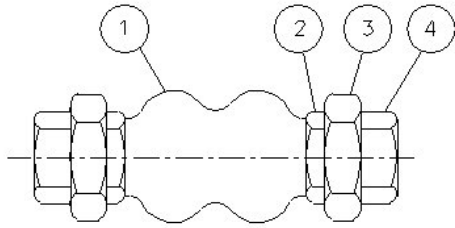
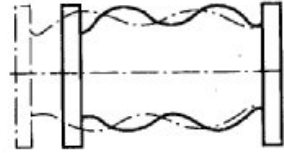


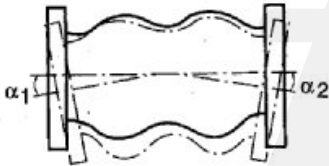
OG101-LEI



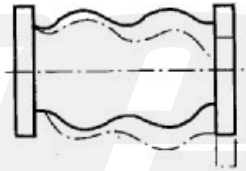
Axial Compression



Axial Elongation



Angular Deflection



Lateral Displacement

Werkstoffe / Materials

Nr.	Bauteil / Part	Material	Oberflächenbehandlung / Surface Treatment
1	Balg / Bellow	EPDM + Nylon	
2	Schelle / Clamp	C-Stahl / Carbon steel	verzinkt / zinc plated
3	Verbindung / Union	C-Stahl / Carbon steel	verzinkt / zinc plated
4	Muffe / Nut	C-Stahl / Carbon steel	verzinkt / zinc plated

Abmessungen / Dimensions [mm]

DN	INCH	PN	L	Weight [kg]	Axial Compression	Axial Elongation	Angular Deflection	Lateral Displacement
20	3/4"	PN10	200	0,71	22	5	45°	22
25	1"	PN10	200	1,09	22	6	45°	22
32	1 1/4"	PN10	200	1,31	22	6	45°	22
40	1 1/2"	PN10	200	1,78	22	6	35°	22
50	2"	PN10	200	2,65	22	6	25°	22
65	2 1/2"	PN10	245	3,80	22	6	25°	22
80	3"	PN10	245	5,30	22	6	25°	22

Merkmale / Features

- D** • Kompensator für axiale und laterale Bewegungen
- OG101 nach DIN: Muffenanschluss nach ISO 7-1 (DIN 10226-1)
- OG101 nach ANSI: Muffenanschluss nach ASME B1.20.1 (NPT)
- Balg: EPDM
- Muffen: C-Stahl, verzinkt
- Max. Betriebsdruck: 10 bar
- Max. Arbeitsvakuum: 400 mbar
- Temperaturbereich: -10°C ... +105°C
- Berstdruck: 30 bar

- E** • Expansion joint for axial and lateral movement
- OG101 acc. to DIN: threaded ends acc. to ISO 7-1 (DIN 10226-1)
- OG101 acc. to ANSI: threaded ends acc. to ANSI B 2.1 (NPT)
- Bellow: EPDM
- Ends: carbon steel, zinc plated
- Max. working pressure: 10 bar
- Max. working vacuum: 400 mbar
- Temperature range: -10°C ... +105°C
- Burst pressure: 30 bar



OG101-LEI

Druck-Temperatur-Diagramm / Pressure temperature diagram

