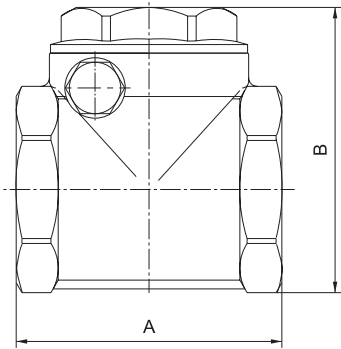


**RK104-MMNOI / RK104-MMMOI**

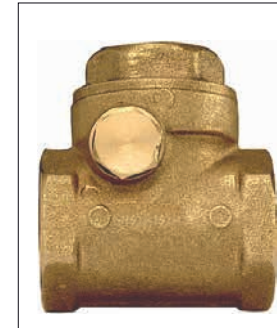


Dimensions [mm]

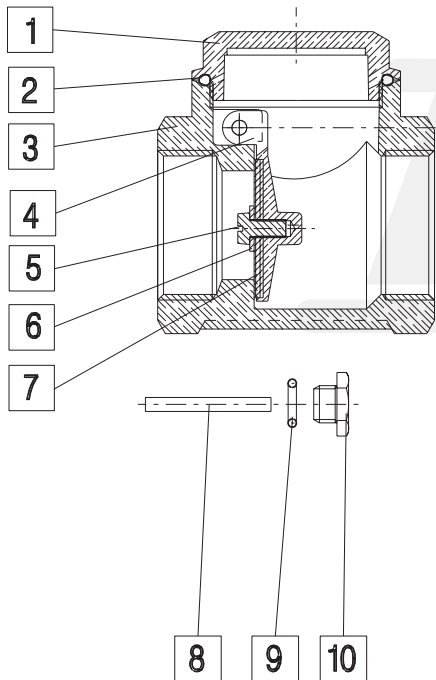
DN	INCH	A	B	bar	psi	Weight [g]
10	3/8"	43	50	12	170	192
15	1/2"	43	50	12	170	171
20	3/4"	52	59,5	12	170	272
25	1"	62	68	12	170	416
32	1 1/4"	72	77	10	140	632
40	1 1/2"	81	88	10	140	804
50	2"	94	100	10	140	1124
65	2 1/2"	119	128	8	110	2020
80	3"	134	148	8	110	2870
100	4"	169	185	8	110	5300

- D**
- Gehäuse: Messing
  - Klappe: Messing
  - Druckbereich: 0 - max 12 bar
  - RK105-MMNOI: Dichtung: NBR
  - RK105-MMMOI: Dichtung: Metall
  - Temperaturbereich: -10°C - 90°C
  - Muffenanschluss: ISO 228/1

- E**
- Case: brass
  - Disc: brass
  - Pressure range: 0 - max. 12 bar
  - RK105-MMNOI: Seal: NBR
  - RK105-MMMOI: Seal: Metall
  - Working temperature: -10°C - 90°C
  - Threaded ends: ISO 228/1



RK105-MMNOI / RK105-MMMOI



Materials

Nr.	Bauteil / Part	Material	Oberflächenbehandlung / Surface Treatment
1	Pasststück / End adapter	CW617N	
2	O-Ring	NBR	
3	Gehäuse / Body	CW617N	heißgepresst / hot pressed
4	Leiste / Batten	CW617N	heißgepresst / hot pressed
5	Schraube / Screw	CW617N	
6	Unterlegscheibe / Washer	UNI EN 1652	
7	Dichtung / Seal	NBR	
8	Klappe / Disc	CW614N	
9	O-Ring	NBR	
10	Schraube / Plug	CW614N	

**RK104**

Gewindetiefe / Depth of thread

	1/4"	3/8"	1/2"	3/4"	1"	1 1/4"	1 1/2"	2"	2 1/2"	3"	4"
L1		8	8	8	10.5	10.5	13	13	18	20	20
L2		9	8	9	10.5	10.5	11	13	18	20	25

