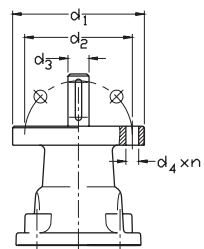
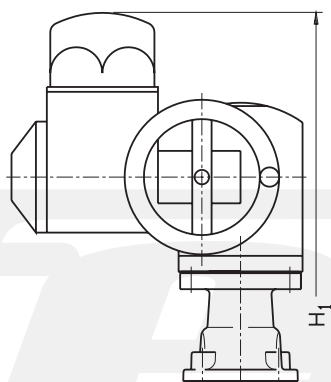


Freie Welle B3 / Bare shaft B3



E-Antrieb / Electric actuator



Merkmale / Features

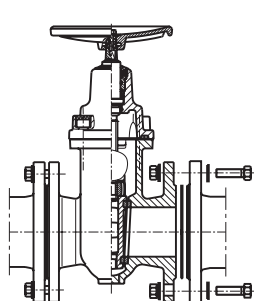
- D**
- Keilschieber mit Dichtring aus Messing
 - Baulänge: EN 558-1, Reihe 14
 - Flanschbohrung: EN 1092-2
 - Dichtheitsklasse A
 - Nenndruck PN10 / PN16
 - Max. Betriebstemperatur: +120°C
 - Gehäuse / Keil: EN-GJL-250 (GG25)
 - Dichtring: Messing
 - Spindelabdichtung mit Schutz gegen das Eindringen von Verunreinigungen von außen
 - Korrosionsschutz für alle Bauelemente
 - Polyvinyl-Beschichtung 100µm

- E**
- Wedge-ring gate valve with brass sealing ring
 - Face to face: EN 558-1, Row 14
 - Flanged ends according to EN1092-2
 - Leakage class A
 - Nominal pressure PN10 / PN16
 - Max. working temperature: +120°C
 - Body / wedge: EN-GJL-250 (GG25)
 - Sealing ring: brass
 - Spindle seal with protection against the ingress of contaminants from the outside
 - All parts are protected against corrosion
 - Polyvinyl paint 100µm

Werkstoffe / Materials

Nr.	Bauteil / Part	Material
1	Gehäuse / Body	EN-GJL-250 (GG25)
2	Deckel / Bonnet	EN-GJL-250 (GG25)
3	Keil / Wedge	EN-GJL-250 (GG25)
4	Dichtung / Packing cork	Messing / Brass
5	Sicherungsring / Protection ring	1.1260
6	Dichtung / Cleaning gasket	EPDM
7	Spindelmutter / Spindle nut	Messing / Brass
8	Spindel / Spindle	1.4021
9	Deckeldichtung / Body-bonnet gasket	EPDM
10	O-Ring	EPDM
11	O-Ring	EPDM
12	Schraube / Screw	Stahl / Steel Fe/Zn5
13	Dichtring / Ring	Messing / Brass
14	Handrad / Handwheel	EN-GJL-250 (GG25)
15	Schraubblende / Screw stopper	Paraffin
16	Unterlegscheibe / Washer	Polyamid PA6

MONTAGE / INSTALLATION



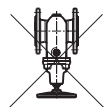
empfohlen
recommended



zulässig
permissible



unzulässig
inadmissible



Abmessungen / Dimensions [mm]

DN	PN	L	H	H1	d	D	K PN16 (PN10)	C	f	I PN16 (PN10)	n PN16 (PN10)	d1	d2	d3	d4	S	Dk	LH thread	AUMA	No. turns	Weight [kg]
40	PN10/16	140	230	461	84	150	110	18	3	22	4	90	70	20	9x4	14	200	Tr16x4	SA07.6, F07	15	11
50	PN10/16	150	250	481	99	165	125	20	3	22	4	90	70	20	9x4	14	200	Tr16x4	SA07.6, F07	18	13
65	PN10/16	170	280	507	118	185	145	20	3	22	4	125	102	20	11x4	17	200	Tr16x4	SA10.2, F10	20	18
80	PN10/16	180	310	530	132	200	160	22	3	22	8	125	102	20	11x4	17	200	Tr16x4	SA10.2, F10	26	21
100	PN10/16	190	350	563	156	220	180	24	3	23	8	125	102	20	11x4	19	250	Tr20x4	SA10.2, F10	30	30
125	PN10/16	200	395	604	184	250	210	26	3	25	8	125	102	20	11x4	19	250	Tr24x5	SA10.2, F10	29	42
150	PN10/16	210	450	675	211	285	240	26	3	26	8	125	102	20	11x4	19	250	Tr24x5	SA10.2, F10	36	54
200	PN10/16	230	510	750	266	340	295	30	3	29	12 (8)	125	102	20	11x4	24	320	Tr24x5	SA10.2, F10	46	80
250	PN10/16	250	633	875	319	405	355 (350)	30	3	28 (23)	12	175	140	30	18x4	27	320	Tr32x6	SA14.2, F14	48	101
300	PN10/16	270	708	950	370	460	410 (400)	32	4	28 (23)	12	175	140	30	18x4	27	320	Tr32x6	SA14.2, F14	57	149