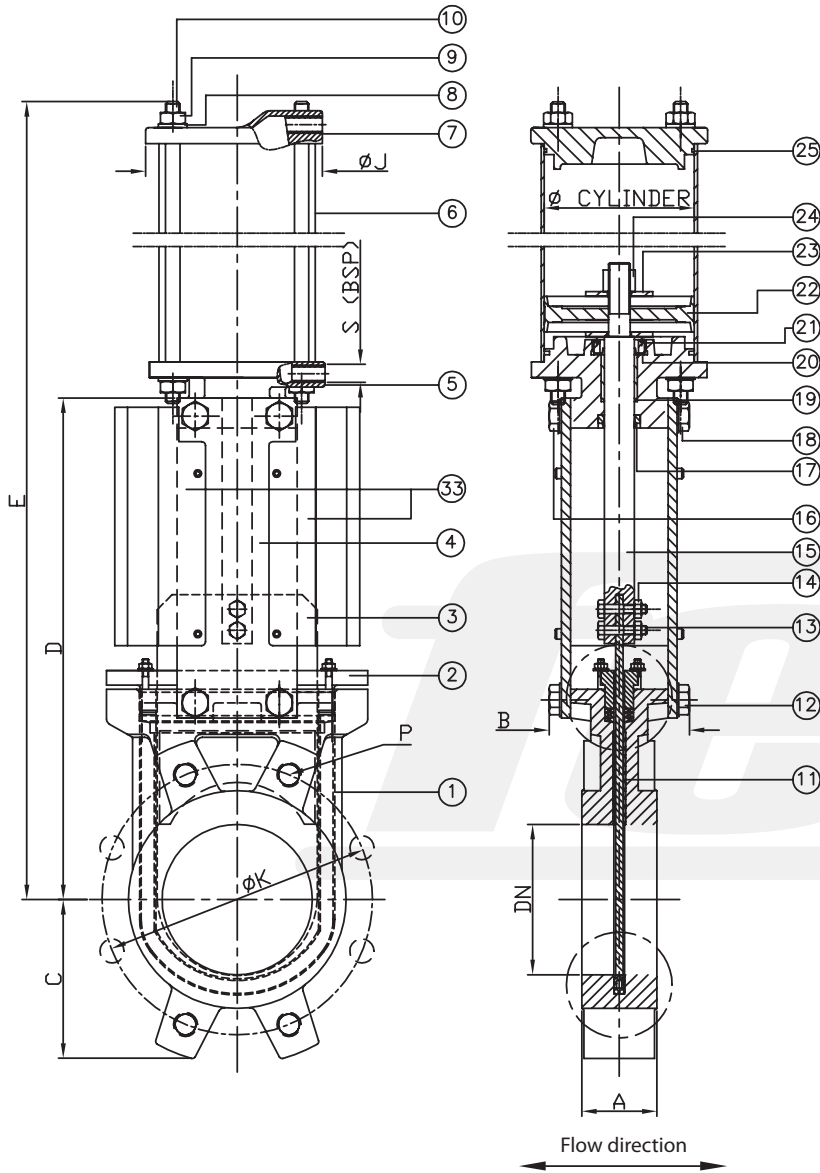
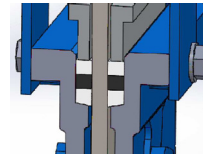
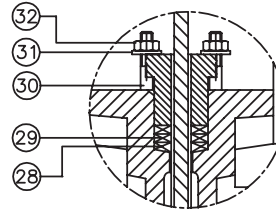


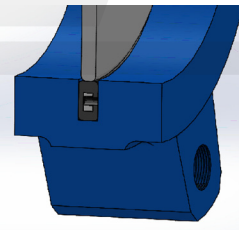
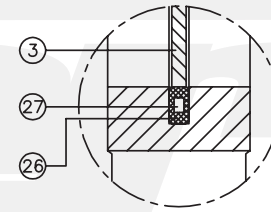
BIDIRECTIONAL TIGHTNESS



PACKING DETAIL



SEAT DETAIL



Dimensions*

DN	INCH	A	B	C	D	E	Ø Cylinder	ØJ	S (B.S.P.)	ØK PN10	P No. holes	P PN10
50	2"	40	90	65	238	409	80	102	1/4"	125	4	M16
65	2 1/2"	40	90	70	266	454	80	102	1/4"	145	4	M16
80	3"	50	90	92	291	495	80	102	1/4"	160	8	M16
100	4"	50	90	107	337	559	100	122	1/4"	180	8	M16
125	5"	50	100	120	366	629	125	147	1/4"	210	8	M16
150	6"	60	100	130	416	705	125	147	1/4"	240	8	M20
200	8"	60	120	158	523	870	160	182	1/4"	295	8	M20
250	10"	70	120	200	622	1038	200	229	1/4"	350	12	M20

Materials*

Execution in:	Cast iron
1 Body	GG25
2 Packing gland	Aluminium
3 Gate	1.4306/SS304L
4 Support plate	Steel
5 Lower cup	Aluminium
6 Pneumatic tube	Aluminium
7 Upper cup	Aluminium
8 Washer	Steel
9 Nut	Steel
10 Tie rod	Steel
11 Internal guides	Cestilene HD1000
12 Bolts	A2
13 Union studs	A2
14 Union nuts	A2
15 Stem	1.4305/SS303
16 Nut	A2
17 Scraper	NBR
18 Actuator fixing nut	Steel
19 Gasket	Bronze
20 Sealing ring	NBR
21 Sealing gland	1.4408/SS316
22 Piston rod	NBR
23 Washer	A2
24 Nut	A2
25 Sealing o-ring	EPDM
26 Seat	EPDM / NBR / Viton
27 Seat reinforcement	Steel
28 Packing	Synt. + PTFE
29 Packing o-ring	EPDM / NBR / Viton
30 Studs	A2
31 Washer	A2
32 Nut	A2
33 Protections	1.4306/SS304L

Maximum working pressure recommended
DN50 - DN250: 10 bar

Standard test pressure
DN50 - DN250: 6 bar

Colour*
RAL 5015

Flanges drilled according to
EN 1092-2 and DIN 2501: ISO PN10 or ANSI 150

- U-profile perimeter resilient seat
- Internal gate guides with integrated scraper effect
- Full bore 100%

(for further informations please visit our download section on our website)

*Other dimensions / materials / colours on request.