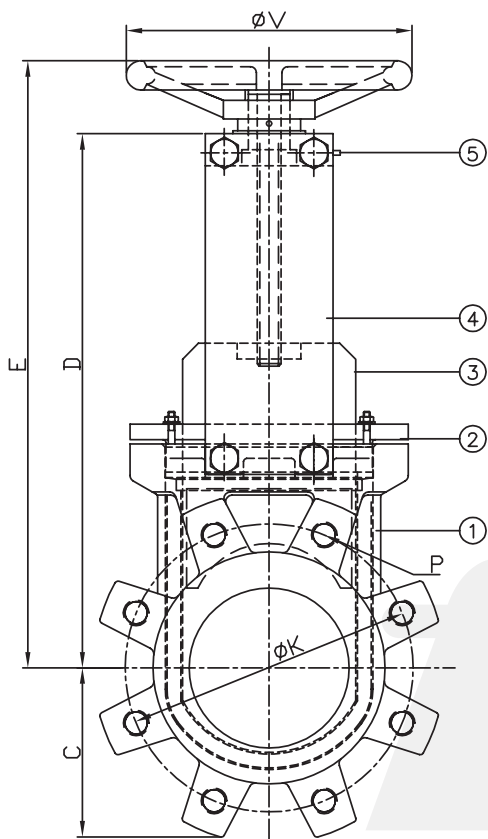
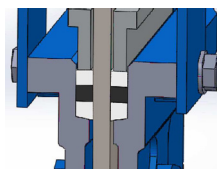
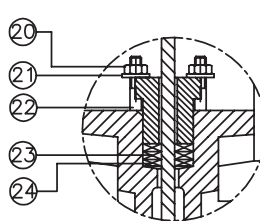


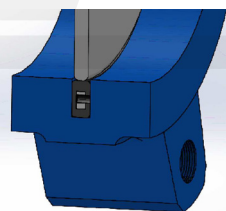
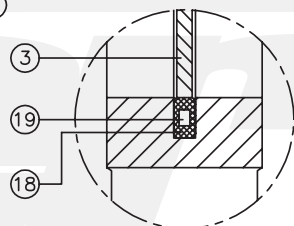
BIDIRECTIONAL TIGHTNESS



PACKING DETAIL



SEAT DETAIL



Flow direction

Dimensions*

DN	INCH	A	B	C	D	E	ϕV	ϕK PN10	P No. holes	P PN10
50	2"	40	82	65	238	285	200	125	4	M16
65	2 1/2"	40	82	70	266	310	200	145	4	M16
80	3"	50	85	92	291	336	200	160	8	M16
100	4"	50	85	107	337	382	200	180	8	M16
125	5"	50	92	120	366	430	250	210	8	M16
150	6"	60	92	130	416	480	250	240	8	M20
200	8"	60	120	158	523	595	300	295	8	M20
250	10"	70	120	200	622	697	300	350	12	M20

Materials*

Execution in:	Cast iron
1 Body	GG25
2 Packing gland	Aluminium
3 Gate	1.4306/SS304L
4 Support plate	Steel
5 Oiling nipple	Standard
6 Internal guides	Cestilene HD1000
7 Grower washer	A2
8 Stem drive socket	Bronze
9 Union studs	A2
10 Stem	1.4301/SS304
11 Support bridge	Steel
12 Stem drive nut	Brass
13 Pin	A2
14 Washer	Brass
15 Stop screw	A2
16 Handwheel	GG25
17 Handwheel fixing nut	Steel
18 Seat	EPDM / NBR / Viton
19 Seat reinforcement	Steel
20 Nut	A2
21 Washer	A2
22 Studs	A2
23 Packing O-Ring	EPDM / NBR / Viton
24 Packing	Synt. + PTFE

Maximum working pressure recommended
DN50 - DN250: 10 bar

Standard test pressure
DN50 - DN250: 6 bar

Colour*

RAL 5015

Flanges drilled according to
EN 1092-2 and DIN 2501: ISO PN10 or ANSI 150

- U-profile perimeter resilient seat
- Internal gate guides with integrated scraper effect
- Full bore 100%

(for further informations please visit our download section on our website)

*Other dimensions / materials / colours on request.