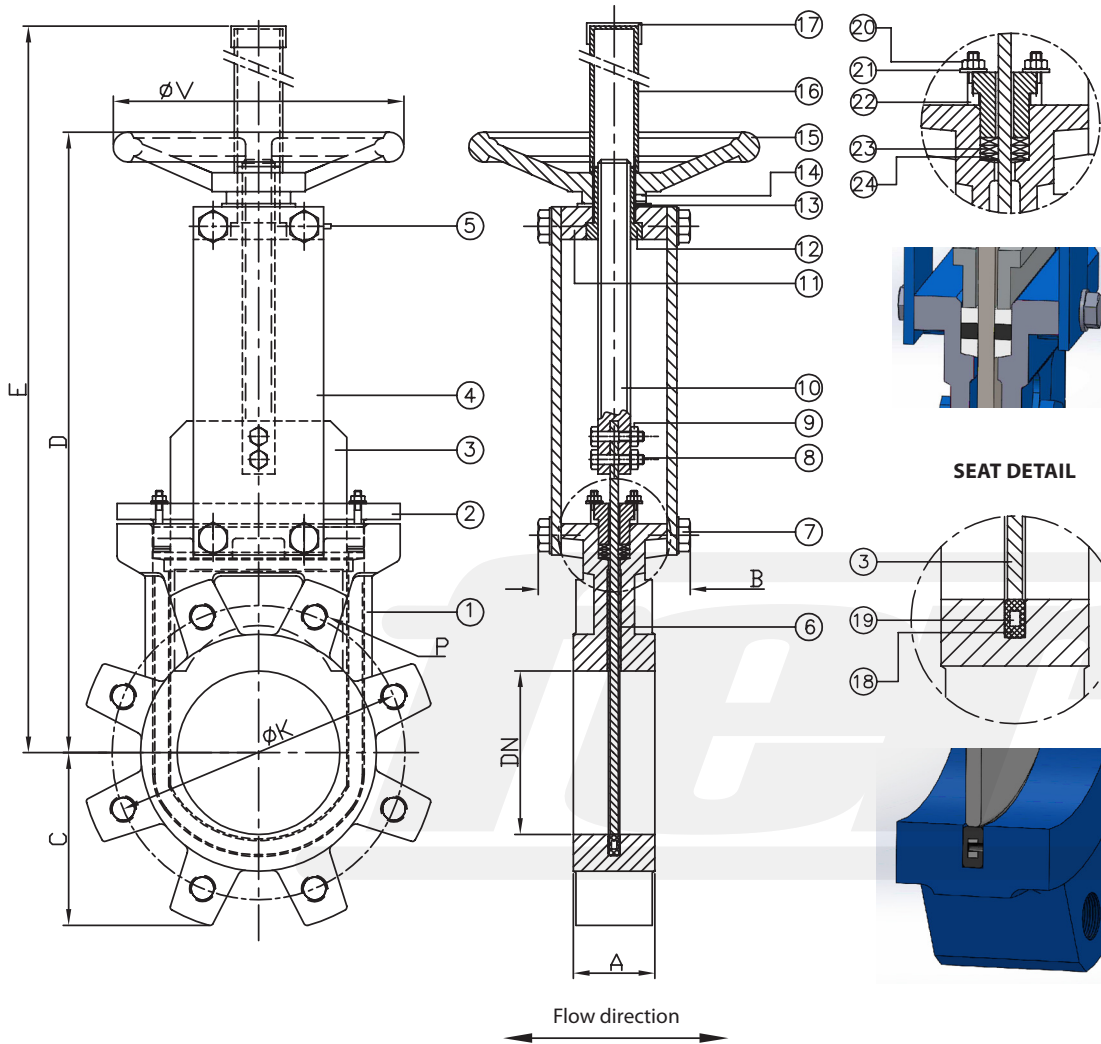
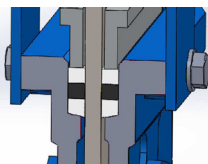
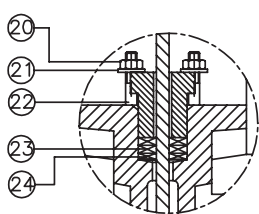


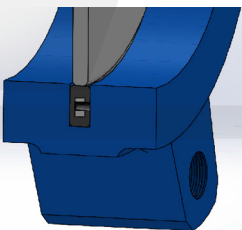
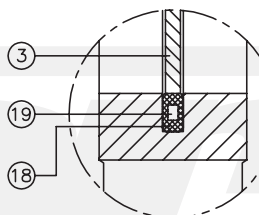
BIDIRECTIONAL TIGHTNESS



PACKING DETAIL



SEAT DETAIL



Dimensions*

DN	INCH	A	B	C	D	E	ØV	ØK PN10	P No. holes	P PN10
50	2"	40	90	65	285	399	200	125	4	M16
65	2 1/2"	40	90	70	310	426	200	145	4	M16
80	3"	50	90	92	336	451	200	160	8	M16
100	4"	50	90	107	382	497	200	180	8	M16
125	5"	50	100	120	430	577	250	210	8	M16
150	6"	60	100	130	480	627	250	240	8	M20
200	8"	60	120	158	595	801	310	295	8	M20
250	10"	70	120	200	697	953	310	350	12	M20

Materials*

Execution in:	Cast iron
1 Body	GG25
2 Gasket clamp	Aluminium
3 Gate	1.4306/SS304L
4 Support plate	Steel
5 Oiling nipple	Standard
6 Internal guides	Cestilene HD1000
7 Bolt	A2
8 Union studs	A2
9 Union nuts	A2
10 Stem	1.4305/SS303
11 Support bridge	Steel
12 Stem drive nut	Brass
13 Washer	Brass
14 Stop screw	A2
15 Handwheel	GG25
16 Tube	Steel
17 Cover	Plastic
18 Seat	EPDM / NBR / Viton
19 Seat reinforcement	Steel
20 Studs	A2
21 Washer	A2
22 Nut	A2
23 Packing o-ring	EPDM / NBR / Viton
24 Packing	Synt. + PTFE

Maximum working pressure recommended
DN50 - DN250: 10 bar

Standard test pressure
DN50 - DN250: 6 bar

Colour*
 RAL 5015

Flanges drilled according to
EN 1092-2 and DIN 2501: ISO PN10 or ANSI 150

- U-profile perimeter resilient seat
- Internal gate guides with integrated scraper effect
- Full bore 100%

(for further informations please visit our download section on our website)

*Other dimensions / materials / colours on request.