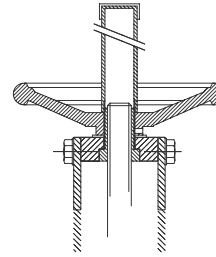


FG400 - Knife Gate Valve

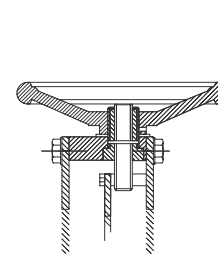


Operations

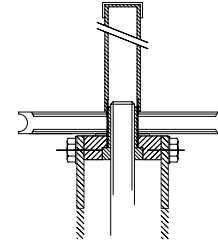
Handwheel, rising stem:



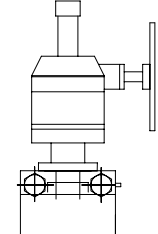
Handwheel:



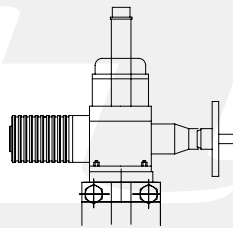
Chainwheel:



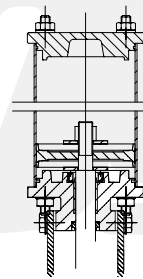
Gear box:



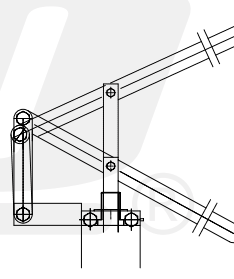
Electric actuator:



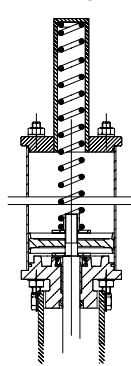
Pneumatic double acting:



Hand lever:



Pneumatic single acting:



The FG model knife gate is a uni-directional wafer valve designed for industrial bulk handling service applications (powdered and granular products). The special design of the body allows for easy passage of the fluid and makes it ideal for use as silo outlet valve. Widely used in industries such as:

- Power plants
- Chemical plants
- etc.
- Food and Beverage
- Mining

The valve is normally installed in the reverse position (seat upstream) in order to avoid problems like build-up in valve body, seat wear or difficult closing.