

# AK131

## Split Lug DN32-200 | PN10-16-ANSI150

VALVE WITH BARE SHAFT

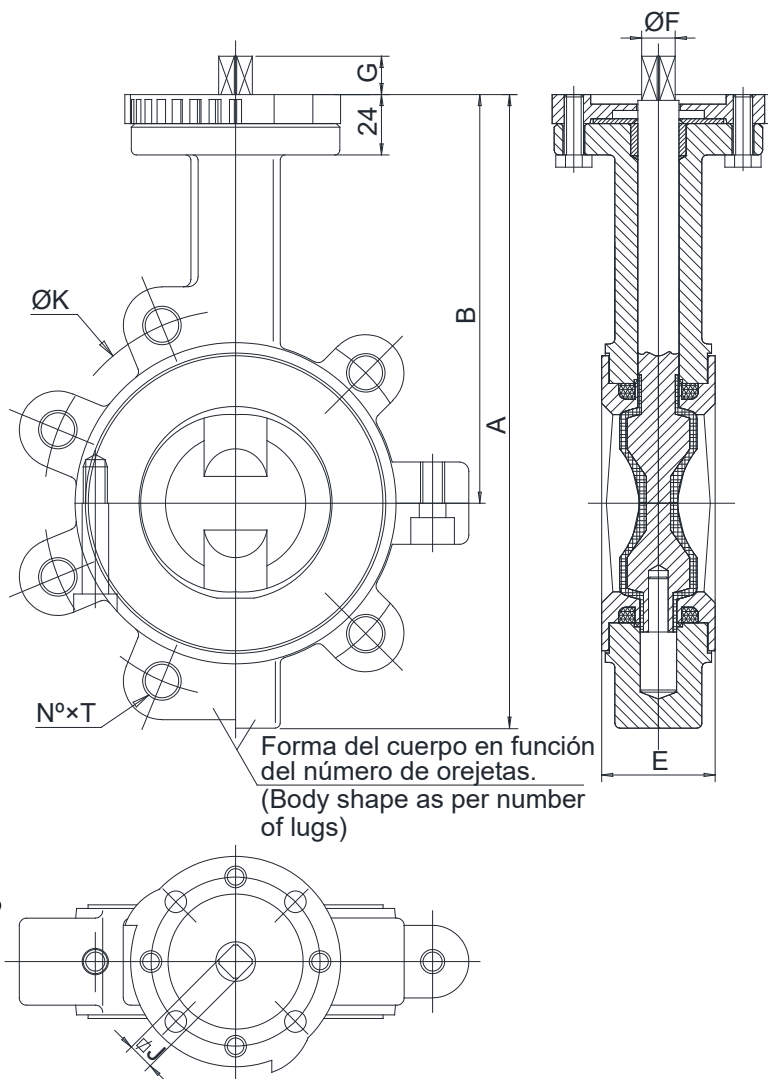
Model: 20LP4040T PTFE

Date: 11-07-2018

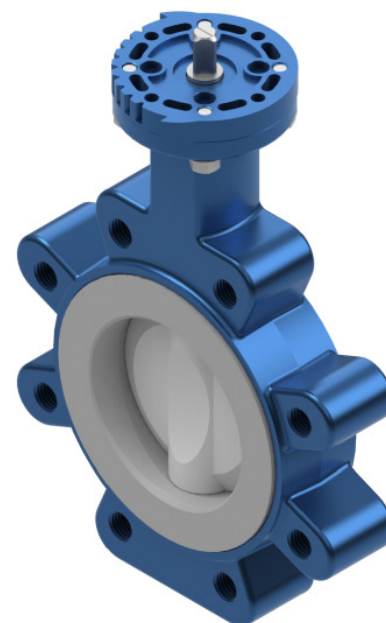
Revision: 0

Page: 1/2

- ▶ **Body** Ductile Iron  
EN 1563 - GJS500-7
- ▶ **Shaft + Disc** Stainless Steel  
ASTM A182 F316 + PTFE  
coated
- ▶ **Seat** PTFE
- ▶ **Temperature** -25°C up to +220°C
- ▶ **Tolerances** ISO 2768-M
- ▶ **Face to Face** EN 558 Series 20  
ISO 5752 Series 20  
API 609 Table 1  
BS 5155 Series 4
- ▶ **Pressure test according to standards** API 598, ISO 5208:  
Body: 1.5×PN  
Seat: 1.1×PN
- ▶ **Mounting between flanges** ISO 7005 - 1, 2 & 3 PN10-16  
ANSI B16.5 CL. 150#  
JIS B2210 - 10K  
AS2129 TABLE E
- ▶ **Tightness test** ISO 5208, Rate A  
API 598



DN		A	B	E	F	G	J	ISO 5211	PN10		PN16		ANSI150		Weight Kg
mm	inch								K	N°×T	K	N°×T	K	N°×T	
40	1½"	205	140	33	9.5	14	8	F05-07	110	4×M16	110	4×M16	98.5	4×1/2"	4
50	2"	226	156	43	9.5	14	8	F05-07	125	4×M16	125	4×M16	120.6	4×5/8"	5.5
65	2½"	241	161	46	12	16	9	F05-07	145	4×M16	145	4×M16	139.7	4×5/8"	6
80	3"	256.5	167	47	14	16	11	F05-07	160	8×M16	160	8×M16	152.4	4×5/8"	6.5
100	4"	288	184	52	14	20	11	F07	180	8×M16	180	8×M16	190.5	8×5/8"	8
125	5"	325	207	56	17	20	14	F07	210	8×M16	210	8×M16	215.9	8×3/4"	11
150	6"	346	215	56	17	20	14	F07	240	8×M20	240	8×M20	241.3	8×3/4"	12
200	8"	437	257	60	21	24	17	F07	295	8×M20	295	12×M20	298.5	8×3/4"	19



Your distribution partner:



# AK131

## Split Lug DN250-300 | PN10-16-ANSI150

VALVE WITH BARE SHAFT

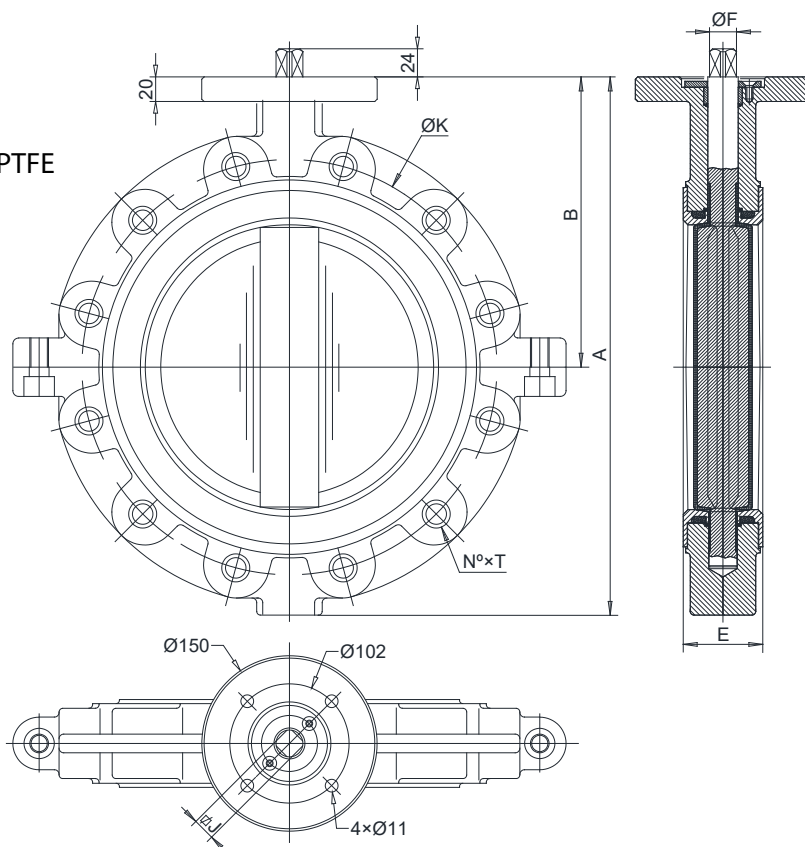
Model: 20LPD1D1T PTFE

Date: 16-01-2018

Revision: 0

Page: 2/2

- ▶ **Body** Ductile Iron  
EN 1563 - GJS500-7
- ▶ **Shaft + Disc** Stainless Steel  
ASTM A890 Grade 1B + PTFE coated
- ▶ **Seat** PTFE
- ▶ **Temperature** -25°C up to +220°C
- ▶ **Tolerances** ISO 2768-M
- ▶ **Face to Face** EN 558 Series 20  
ISO 5752 Series 20  
API 609 Table 1  
BS 5155 Series 4
- ▶ **Pressure test according to standards** EN 12266-1, ISO 5208:  
Body: 1.5×PN  
Seat: 1.1×PN
- ▶ **Mounting between flanges** PN10/16  
ISO 7005, DIN 2501, BS 4504  
ANSI class 150: ANSI B16.5
- ▶ **Tightness test** ISO 5208, zero leakage  
API 598



DN		A	B	E	F	J	PN10		PN16		ANSI150		Weight Kg
mm	inch						K	N°×T	K	N°×T	K	N°×T	
250	10"	448	248	68	25	19	350	12×M20	355	12×M24	362	12×7/8"	37
300	12"	515	280	78	28	22	400	12×M20	410	12×M24	431.8	12×7/8"	58

Your distribution partner:



Blindeisenweg 31 • D-41468 Neuss • Tel.: +49 2131 / 15 39 28-0 • Fax: +49 2131 / 15 39 28-99 • info@fergo.eu • [www.fergo.eu](http://www.fergo.eu)